

List of Tables

1. Obama approval on issues	3
2. Important issue	4
3. Most important issue	5
4. Approval of Obama as President	7
5. Approval of Time Person of the Year decision	8
6. Soundness of Time's Person of the Year decisions, Version A	9
7. Soundness of Time's Person of the Year decisions, Version B	10
8. Best candidate for Person of the Year	11
9. Uncomfortable using this technology	13
10. Comfortable using this technology	14
11. Social networking use	15
12. Impact of social networking on own life	16
13. Impact of social networking on society	17
14. Payments for priority Web transmission	18
15. A great deal or some trust in organizations to decide on regulation of Internet	19
16. Only a little or no trust in organizations to decide on regulation of Internet	21
17. Knowledge of net neutrality	23
18. Support for net neutrality	24
19. Support the following pieces of legislation	25
20. Oppose the following pieces of legislation	28
21. Expectations for full economic recovery	31
22. Approval of tax-cut bill	32
23. Impact of tax-cut bill on economy	33
24. Impact of the tax-cut bill on job creation	34
25. These groups are concerned about issues affecting poor people	35
26. These groups are not concerned about issues affecting poor people	36
27. These groups are concerned about issues affecting middle class people	37
28. These groups are not concerned about issues affecting middle class people	38
29. These groups are concerned about issues affecting wealthy people	39
30. These groups are not concerned about issues affecting wealthy people	40
31. Party leaders inspire quite a bit or a great deal of confidence	41
32. Party leaders inspire very little or no confidence	42
33. Favorability rating of John Boehner, Version A	43
34. Favorability rating of John Boehner, Version B	44
35. Favorability rating of George W. Bush, Version A	45
36. Favorability rating of George W. Bush, Version B	46

The Economist/YouGov Poll

December 18-21 2010



37. Favorability rating of Bill Clinton, Version A	47
38. Favorability rating of Bill Clinton, Version B	48
39. Favorability rating of Hillary Clinton, Version A	49
40. Favorability rating of Hillary Clinton, Version B	50
41. Important characteristic when evaluating elected officials	51
42. Unimportant characteristic when evaluating elected officials	52
43. Reflects negatively on a politician to cry in public	53
44. Reflects negatively on a female elected official to cry in public	54
45. Importance of compromise-oriented congressperson	55
46. Importance of congressperson listening to constituents	56
47. Obama's ideological leanings	57
48. Obama's sincerity	58
49. Obama's likeability	59
50. Words that describe Obama	60
51. Approval of U.S. Congress	62
52. Direction of country	63
53. Trend of economy	64
54. Stock market expectations over next year	65
55. Change in personal finances over past year	66

The Economist/YouGov Poll

December 18-21 2010



1. Obama approval on issues

Below are some issues facing the country. For each one, indicate whether you **approve** or disapprove of the way Barack Obama is handling that issue.

	Total	Age			Race			Gender		Education		
		18-29	30-64	65+	White	Black	Hispanic	Male	Female	HS or Less	Some College	College Grad
The war in Iraq	43.6%	40.4%	45.4%	42.8%	41.3%	62.7%	41.5%	49.4%	38.4%	39.3%	42.0%	52.8%
The economy	36.3%	37.7%	35.2%	37.7%	32.0%	67.2%	37.0%	38.2%	34.5%	29.3%	38.7%	45.1%
Immigration	30.6%	35.4%	29.8%	25.8%	27.0%	53.9%	35.1%	30.1%	31.1%	23.4%	33.6%	39.2%
The environment	43.1%	42.4%	44.1%	40.8%	39.1%	70.0%	47.3%	43.8%	42.5%	37.4%	43.6%	52.1%
Terrorism	44.0%	40.9%	45.2%	44.9%	41.3%	61.8%	47.6%	47.1%	41.3%	39.2%	45.5%	50.4%
Gay rights	40.8%	42.8%	40.8%	37.6%	39.1%	49.1%	46.7%	41.5%	40.1%	31.2%	43.5%	53.6%
Education	43.7%	39.3%	46.4%	41.3%	40.2%	68.3%	45.6%	44.8%	42.6%	40.2%	43.7%	49.4%
Health care	39.4%	40.1%	39.7%	37.0%	35.3%	69.6%	39.6%	41.4%	37.6%	30.9%	42.8%	49.5%
Social security	33.4%	34.0%	34.5%	28.6%	29.5%	62.2%	33.7%	34.5%	32.4%	25.6%	37.7%	41.2%
The budget deficit	29.5%	29.3%	29.6%	29.3%	25.8%	57.0%	29.9%	29.0%	29.9%	22.7%	33.0%	36.6%
The war in Afghanistan	37.7%	37.1%	39.5%	32.6%	35.3%	58.0%	35.5%	43.4%	32.7%	33.6%	35.7%	47.1%
Taxes	36.1%	32.2%	40.7%	26.5%	32.2%	62.8%	39.7%	38.0%	34.5%	29.6%	39.8%	42.8%
Totals	(1,000)	(240)	(608)	(152)	(789)	(111)	(100)	(467)	(533)	(440)	(323)	(237)

	Total	Party ID			Ideology			Region				Family Income		
		Dem	Rep	Ind	Lib	Mod	Con	Northeast	Midwest	South	West	Under 40	40-100	100+
The war in Iraq	43.6%	62.5%	29.2%	44.5%	67.5%	49.6%	33.2%	47.3%	40.0%	40.0%	49.6%	39.6%	50.2%	46.0%
The economy	36.3%	66.7%	8.5%	34.5%	72.3%	48.8%	11.0%	40.7%	31.5%	35.8%	38.1%	36.4%	36.4%	40.9%
Immigration	30.6%	53.9%	6.2%	31.7%	61.8%	37.2%	10.7%	28.5%	32.2%	31.1%	30.1%	29.2%	32.4%	34.0%
The environment	43.1%	73.2%	17.7%	41.6%	75.1%	58.3%	17.8%	45.9%	41.9%	40.2%	46.5%	42.6%	45.1%	50.0%
Terrorism	44.0%	73.2%	20.2%	40.8%	76.2%	58.7%	19.8%	50.1%	42.6%	39.9%	46.7%	42.7%	47.9%	46.0%
Gay rights	40.8%	65.0%	16.0%	40.8%	76.0%	53.7%	15.2%	47.5%	36.5%	38.1%	43.7%	34.7%	45.2%	46.9%
Education	43.7%	72.9%	17.6%	40.2%	77.4%	52.8%	21.6%	50.7%	41.3%	40.2%	45.7%	42.3%	47.3%	47.4%
Health care	39.4%	70.8%	6.8%	39.3%	81.3%	52.9%	8.9%	42.7%	36.4%	36.7%	43.6%	37.8%	41.5%	42.7%
Social security	33.4%	60.8%	8.5%	29.8%	70.5%	41.1%	10.7%	30.7%	32.0%	31.5%	39.4%	31.1%	35.0%	39.7%
The budget deficit	29.5%	56.4%	6.8%	25.5%	58.2%	39.9%	8.0%	29.5%	30.3%	27.2%	32.0%	30.3%	29.5%	32.5%
The war in Afghanistan	37.7%	55.3%	28.4%	33.8%	55.6%	43.8%	29.5%	45.0%	31.5%	35.6%	41.1%	34.9%	40.9%	43.9%
Taxes	36.1%	57.6%	19.2%	33.6%	53.5%	47.7%	21.0%	36.9%	35.6%	35.3%	37.2%	34.6%	41.5%	37.1%
Totals	(1,000)	(356)	(254)	(281)	(211)	(345)	(320)	(192)	(227)	(346)	(235)	(368)	(409)	(126)

The Economist/YouGov Poll

December 18-21 2010



2. Important issue

How important are the following issues to you?

	Total	Age			Race			Gender		Education		
		18-29	30-64	65+	White	Black	Hispanic	Male	Female	HS or Less	Some College	College Grad
The war in Iraq	80.2%	76.3%	81.0%	84.0%	81.8%	68.6%	80.0%	74.3%	85.6%	82.6%	78.6%	78.1%
The economy	95.8%	91.6%	97.3%	97.0%	96.1%	93.0%	95.7%	93.7%	97.6%	94.1%	96.7%	97.5%
Immigration	82.7%	76.3%	83.8%	89.4%	85.1%	67.1%	79.5%	80.5%	84.6%	83.0%	82.9%	82.0%
The environment	78.5%	73.1%	80.6%	80.0%	77.0%	83.0%	87.0%	75.4%	81.3%	80.6%	78.3%	75.2%
Terrorism	84.1%	76.3%	85.8%	90.8%	83.7%	84.1%	87.9%	80.2%	87.5%	87.0%	83.8%	79.4%
Gay rights	49.3%	55.9%	47.5%	44.7%	49.7%	47.1%	48.3%	44.9%	53.3%	44.6%	52.2%	53.6%
Education	88.5%	88.5%	87.7%	91.3%	88.2%	93.0%	85.7%	85.7%	90.9%	86.2%	90.8%	89.5%
Health care	92.8%	88.4%	94.5%	94.0%	92.9%	91.4%	93.8%	90.1%	95.3%	91.6%	94.7%	92.7%
Social security	89.6%	76.6%	93.0%	99.0%	89.9%	88.0%	89.6%	86.2%	92.7%	91.3%	87.7%	89.2%
The budget deficit	89.1%	83.7%	90.4%	93.1%	89.8%	84.2%	88.5%	85.5%	92.3%	88.2%	89.9%	89.6%
The war in Afghanistan	82.7%	77.6%	83.9%	86.5%	84.3%	69.3%	84.1%	79.4%	85.6%	82.3%	82.0%	84.2%
Taxes	92.5%	88.3%	94.0%	94.1%	93.2%	90.7%	88.3%	92.0%	92.9%	91.5%	92.8%	93.9%
Totals	(1,000)	(240)	(608)	(152)	(789)	(111)	(100)	(467)	(533)	(440)	(323)	(237)

	Total	Party ID			Ideology			Region				Family Income		
		Dem	Rep	Ind	Lib	Mod	Con	Northeast	Midwest	South	West	Under 40	40-100	100+
The war in Iraq	80.2%	77.8%	89.6%	78.7%	75.5%	78.6%	88.1%	82.5%	76.5%	80.0%	82.4%	82.1%	79.4%	78.6%
The economy	95.8%	96.5%	98.2%	95.4%	95.1%	96.1%	98.5%	96.5%	97.3%	94.9%	95.1%	95.0%	96.2%	99.1%
Immigration	82.7%	80.5%	89.6%	82.1%	78.2%	79.3%	91.7%	82.6%	81.3%	82.6%	84.3%	82.3%	82.1%	89.9%
The environment	78.5%	90.4%	64.8%	78.9%	93.2%	82.9%	64.5%	83.7%	77.6%	76.6%	78.2%	83.1%	76.4%	77.0%
Terrorism	84.1%	80.8%	94.1%	79.6%	67.4%	84.5%	94.4%	84.9%	80.1%	87.0%	82.9%	85.5%	83.3%	84.3%
Gay rights	49.3%	61.3%	34.1%	51.3%	73.3%	49.8%	36.7%	50.0%	48.5%	48.0%	51.2%	52.6%	48.6%	41.9%
Education	88.5%	94.3%	84.3%	86.6%	92.9%	92.7%	84.3%	90.0%	87.0%	87.7%	89.8%	91.0%	88.5%	83.5%
Health care	92.8%	96.0%	91.3%	92.6%	95.8%	94.5%	90.8%	95.8%	95.3%	91.9%	89.5%	93.7%	93.0%	93.2%
Social security	89.6%	90.0%	89.7%	91.9%	85.0%	91.7%	91.7%	90.0%	89.0%	89.1%	90.8%	89.2%	90.7%	88.6%
The budget deficit	89.1%	87.7%	95.3%	88.2%	80.6%	89.9%	96.2%	91.2%	91.2%	88.8%	85.9%	87.4%	91.5%	93.0%
The war in Afghanistan	82.7%	80.7%	91.2%	80.9%	80.8%	81.6%	88.7%	85.4%	80.6%	80.7%	85.4%	81.2%	83.4%	86.4%
Taxes	92.5%	90.4%	98.2%	93.7%	88.7%	92.1%	98.7%	94.0%	95.7%	91.2%	90.2%	92.1%	93.7%	91.5%
Totals	(1,000)	(356)	(254)	(281)	(211)	(345)	(320)	(192)	(227)	(346)	(235)	(368)	(409)	(126)

The Economist/YouGov Poll

December 18-21 2010



3. Most important issue

Which of these is the **most** important issue for you?

	Total	Age			Race			Gender		Education		
		18-29	30-64	65+	White	Black	Hispanic	Male	Female	HS or Less	Some College	College Grad
The war in Iraq	0.2%	0.0%	0.4%	0.0%	0.1%	0.8%	0.0%	0.0%	0.4%	0.2%	0.0%	0.4%
The economy	38.4%	35.6%	44.0%	23.4%	36.4%	48.2%	45.3%	41.0%	36.1%	36.4%	39.4%	40.3%
Immigration	5.5%	6.9%	4.3%	7.5%	5.9%	2.1%	6.1%	6.7%	4.4%	7.2%	6.3%	1.8%
The environment	2.9%	5.5%	2.6%	0.0%	3.0%	1.7%	3.6%	3.3%	2.6%	2.7%	3.3%	2.9%
Terrorism	5.7%	4.2%	6.1%	6.5%	6.2%	2.5%	4.9%	6.2%	5.2%	7.0%	4.3%	5.1%
Gay rights	2.2%	6.4%	0.7%	0.6%	2.4%	0.7%	2.3%	3.3%	1.2%	1.0%	4.2%	1.7%
Education	6.4%	15.0%	3.9%	1.8%	5.7%	11.3%	7.3%	5.9%	6.9%	3.1%	8.3%	9.8%
Health care	12.3%	13.9%	12.3%	10.0%	12.7%	8.0%	14.1%	7.5%	16.6%	8.2%	16.6%	13.9%
Social security	12.8%	1.8%	10.7%	37.3%	13.2%	13.9%	7.8%	8.6%	16.5%	21.3%	8.0%	4.7%
The budget deficit	7.2%	6.8%	6.6%	9.7%	7.8%	3.0%	6.7%	10.0%	4.7%	7.1%	4.6%	10.3%
The war in Afghanistan	1.7%	1.2%	2.1%	1.4%	1.9%	1.7%	0.0%	1.4%	2.1%	1.3%	1.5%	2.7%
Taxes	4.7%	2.6%	6.4%	1.9%	4.8%	6.2%	2.0%	6.1%	3.3%	4.4%	3.5%	6.4%
Totals (Unweighted)	100.0% (985)	100.0% (232)	100.0% (601)	100.0% (152)	100.0% (776)	100.0% (109)	100.0% (100)	100.0% (458)	100.0% (527)	100.0% (429)	100.0% (321)	100.0% (235)

	Total	Party ID			Ideology			Region				Family Income		
		Dem	Rep	Ind	Lib	Mod	Con	Northeast	Midwest	South	West	Under 40	40-100	100+
The war in Iraq	0.2%	0.3%	0.0%	0.4%	0.5%	0.4%	0.0%	0.0%	0.4%	0.3%	0.0%	0.3%	0.2%	0.0%
The economy	38.4%	38.5%	33.0%	44.5%	36.6%	43.5%	35.4%	48.3%	38.4%	35.2%	35.5%	33.2%	42.2%	44.6%
Immigration	5.5%	2.4%	9.6%	5.8%	0.9%	4.7%	8.2%	1.5%	4.0%	7.3%	7.3%	6.5%	5.0%	5.3%
The environment	2.9%	4.1%	1.1%	2.8%	5.8%	2.8%	1.3%	4.3%	1.0%	2.2%	4.7%	3.2%	2.4%	5.0%
Terrorism	5.7%	3.6%	10.4%	3.4%	0.5%	3.5%	11.0%	8.7%	2.4%	6.3%	5.5%	4.8%	4.7%	5.9%
Gay rights	2.2%	2.8%	0.8%	2.9%	6.6%	2.2%	0.6%	3.4%	1.4%	1.2%	3.5%	2.1%	2.0%	0.7%
Education	6.4%	8.8%	3.8%	4.8%	14.1%	7.3%	1.6%	2.9%	6.9%	7.7%	6.8%	8.2%	6.0%	4.3%
Health care	12.3%	16.0%	8.5%	10.9%	19.0%	10.5%	9.6%	9.9%	17.7%	11.4%	10.4%	11.4%	13.1%	12.6%
Social security	12.8%	17.1%	10.4%	9.6%	7.3%	16.6%	9.2%	9.3%	12.8%	13.7%	14.1%	23.9%	5.2%	4.3%
The budget deficit	7.2%	2.8%	11.6%	8.7%	3.4%	3.8%	13.8%	4.7%	5.6%	8.6%	8.3%	2.2%	12.0%	8.0%
The war in Afghanistan	1.7%	1.5%	1.7%	2.4%	2.5%	1.3%	2.2%	2.8%	2.5%	1.4%	0.7%	1.3%	2.5%	2.0%
Taxes	4.7%	2.1%	9.2%	3.8%	2.8%	3.4%	7.0%	4.3%	6.8%	4.5%	3.2%	3.1%	4.7%	7.3%

continued on the next page . . .

The Economist/YouGov Poll

December 18-21 2010



continued from previous page

	Total	Party ID			Ideology			Region				Family Income		
		Dem	Rep	Ind	Lib	Mod	Con	Northeast	Midwest	South	West	Under 40	40-100	100+
Totals (Unweighted)	100.0% (985)	100.0% (353)	100.0% (253)	100.0% (277)	100.0% (208)	100.0% (342)	100.0% (318)	100.0% (189)	100.0% (224)	100.0% (338)	100.0% (234)	100.0% (361)	100.0% (406)	100.0% (124)

The Economist/YouGov Poll

December 18-21 2010



4. Approval of Obama as President

Do you approve or disapprove of the way Barack Obama is handling his job as President?

	Total	Age			Race			Gender		Education		
		18-29	30-64	65+	White	Black	Hispanic	Male	Female	HS or Less	Some College	College Grad
Strongly Approve	15.3%	12.2%	16.1%	17.3%	11.1%	48.7%	12.3%	14.2%	16.3%	12.7%	17.7%	16.8%
Somewhat Approve	27.3%	36.2%	24.6%	22.3%	26.5%	28.9%	33.2%	28.8%	25.9%	22.6%	30.0%	31.9%
Disapprove	14.7%	12.2%	16.3%	13.1%	15.5%	5.0%	18.9%	14.9%	14.4%	15.1%	15.7%	12.7%
Strongly Disapprove	35.3%	28.8%	36.5%	41.5%	40.2%	5.9%	26.4%	37.5%	33.3%	37.0%	31.8%	36.5%
Not Sure	7.5%	10.6%	6.5%	5.8%	6.7%	11.5%	9.3%	4.5%	10.1%	12.6%	4.8%	2.1%
Totals (Unweighted)	100.0% (998)	100.0% (238)	100.0% (608)	100.0% (152)	100.0% (788)	100.0% (111)	100.0% (99)	100.0% (466)	100.0% (532)	100.0% (439)	100.0% (322)	100.0% (237)

	Total	Party ID			Ideology			Region				Family Income		
		Dem	Rep	Ind	Lib	Mod	Con	Northeast	Midwest	South	West	Under 40	40-100	100+
Strongly Approve	15.3%	35.4%	1.8%	8.3%	34.8%	17.7%	5.4%	16.3%	16.1%	16.5%	11.9%	17.7%	13.9%	13.6%
Somewhat Approve	27.3%	40.6%	6.3%	32.7%	45.1%	38.4%	6.8%	27.1%	27.3%	23.6%	32.8%	25.7%	28.5%	30.2%
Disapprove	14.7%	8.5%	17.8%	16.6%	12.9%	17.9%	12.3%	17.6%	15.1%	12.9%	14.6%	15.6%	17.2%	7.5%
Strongly Disapprove	35.3%	8.2%	71.5%	38.4%	2.6%	22.3%	73.0%	29.4%	35.0%	40.0%	33.2%	28.5%	36.8%	46.9%
Not Sure	7.5%	7.3%	2.6%	4.0%	4.6%	3.7%	2.5%	9.6%	6.5%	6.9%	7.5%	12.5%	3.5%	1.7%
Totals (Unweighted)	100.0% (998)	100.0% (356)	100.0% (253)	100.0% (280)	100.0% (211)	100.0% (344)	100.0% (320)	100.0% (192)	100.0% (227)	100.0% (345)	100.0% (234)	100.0% (366)	100.0% (409)	100.0% (126)

The Economist/YouGov Poll

December 18-21 2010



5. Approval of Time Person of the Year decision

The founder and CEO of Facebook, Mark Zuckerberg, was named Time magazine's 2010 Person of the Year. The title goes to the man or woman who, for better or for worse, has had the most influence on the year's events. Do you agree or disagree with Time's decision?

	Total	Age			Race			Gender		Education		
		18-29	30-64	65+	White	Black	Hispanic	Male	Female	HS or Less	Some College	College Grad
Agree	29.7%	39.3%	28.7%	17.4%	27.9%	40.2%	33.0%	29.3%	30.1%	24.6%	29.4%	38.5%
Disagree	36.9%	33.9%	36.4%	43.6%	39.3%	25.4%	28.5%	39.9%	34.2%	28.8%	43.6%	42.3%
Not sure	33.4%	26.8%	34.9%	39.0%	32.8%	34.5%	38.4%	30.9%	35.7%	46.6%	27.0%	19.2%
Totals (Unweighted)	100.0% (998)	100.0% (240)	100.0% (607)	100.0% (151)	100.0% (787)	100.0% (111)	100.0% (100)	100.0% (466)	100.0% (532)	100.0% (438)	100.0% (323)	100.0% (237)

	Total	Party ID			Ideology			Region				Family Income		
		Dem	Rep	Ind	Lib	Mod	Con	Northeast	Midwest	South	West	Under 40	40-100	100+
Agree	29.7%	37.0%	26.0%	27.7%	40.3%	32.8%	23.9%	35.5%	31.3%	24.1%	32.0%	29.1%	31.8%	35.6%
Disagree	36.9%	29.6%	43.2%	43.8%	37.5%	35.0%	45.2%	30.9%	35.0%	39.7%	39.0%	31.9%	35.7%	47.7%
Not sure	33.4%	33.4%	30.9%	28.5%	22.2%	32.2%	30.9%	33.6%	33.7%	36.2%	29.0%	39.1%	32.5%	16.7%
Totals (Unweighted)	100.0% (998)	100.0% (355)	100.0% (254)	100.0% (281)	100.0% (211)	100.0% (345)	100.0% (318)	100.0% (190)	100.0% (227)	100.0% (346)	100.0% (235)	100.0% (366)	100.0% (409)	100.0% (126)

The Economist/YouGov Poll

December 18-21 2010



6. Soundness of Time's Person of the Year decisions, Version A

Past Time magazine Persons of the Year include people like George W. Bush, Bill Clinton, Mikhail Gorbachev, Newt Gingrich, and Ted Turner. In general, do you think Time magazine makes good decisions about who it designates as Person of the Year? Asked of 50% of respondents

	Total	Age			Race			Gender		Education		
		18-29	30-64	65+	White	Black	Hispanic	Male	Female	HS or Less	Some College	College Grad
Good decisions	44.0%	48.5%	44.8%	34.0%	46.2%	40.3%	30.2%	45.2%	42.9%	34.5%	51.2%	51.8%
Bad decisions	24.8%	22.5%	21.8%	39.7%	24.4%	24.4%	28.2%	28.7%	21.2%	28.5%	23.2%	20.4%
Not sure	31.3%	29.0%	33.4%	26.3%	29.4%	35.3%	41.7%	26.1%	36.0%	37.0%	25.6%	27.8%
Totals (Unweighted)	100.0% (477)	100.0% (99)	100.0% (304)	100.0% (74)	100.0% (372)	100.0% (56)	100.0% (49)	100.0% (219)	100.0% (258)	100.0% (215)	100.0% (144)	100.0% (118)

	Total	Party ID			Ideology			Region				Family Income		
		Dem	Rep	Ind	Lib	Mod	Con	Northeast	Midwest	South	West	Under 40	40-100	100+
Good decisions	44.0%	56.3%	40.7%	40.0%	53.9%	54.1%	39.1%	42.5%	44.2%	42.2%	47.1%	40.7%	48.0%	51.0%
Bad decisions	24.8%	17.8%	27.9%	29.2%	20.3%	20.1%	31.6%	17.0%	26.9%	26.5%	26.2%	23.9%	23.2%	23.2%
Not sure	31.3%	26.0%	31.4%	30.8%	25.8%	25.8%	29.2%	40.4%	28.8%	31.3%	26.7%	35.4%	28.8%	25.8%
Totals (Unweighted)	100.0% (477)	100.0% (178)	100.0% (126)	100.0% (123)	100.0% (104)	100.0% (160)	100.0% (153)	100.0% (94)	100.0% (111)	100.0% (159)	100.0% (113)	100.0% (177)	100.0% (194)	100.0% (61)

The Economist/YouGov Poll

December 18-21 2010



7. Soundness of Time's Person of the Year decisions, Version B

In general, do you think Time magazine makes good decisions about who it designates as Person of the Year? Asked of 50% of respondents

	Total	Age			Race			Gender		Education		
		18-29	30-64	65+	White	Black	Hispanic	Male	Female	HS or Less	Some College	College Grad
Good decisions	28.6%	35.7%	30.0%	12.1%	27.1%	37.6%	32.9%	28.2%	28.9%	21.2%	29.0%	40.7%
Bad decisions	25.2%	20.3%	26.4%	29.9%	26.6%	13.2%	25.6%	31.1%	20.0%	23.6%	24.6%	28.9%
Not sure	46.2%	44.0%	43.6%	58.0%	46.3%	49.2%	41.5%	40.7%	51.1%	55.2%	46.4%	30.5%
Totals (Unweighted)	100.0% (522)	100.0% (141)	100.0% (303)	100.0% (78)	100.0% (416)	100.0% (55)	100.0% (51)	100.0% (247)	100.0% (275)	100.0% (224)	100.0% (179)	100.0% (119)

	Total	Party ID			Ideology			Region				Family Income		
		Dem	Rep	Ind	Lib	Mod	Con	Northeast	Midwest	South	West	Under 40	40-100	100+
Good decisions	28.6%	44.5%	18.2%	27.6%	46.7%	35.0%	19.7%	42.5%	27.1%	23.5%	27.0%	26.0%	34.0%	30.7%
Bad decisions	25.2%	13.6%	42.9%	24.1%	15.7%	18.8%	40.5%	20.4%	21.1%	31.6%	23.1%	19.5%	24.2%	37.4%
Not sure	46.2%	41.9%	39.0%	48.3%	37.6%	46.1%	39.8%	37.1%	51.7%	44.8%	49.9%	54.5%	41.9%	31.8%
Totals (Unweighted)	100.0% (522)	100.0% (178)	100.0% (128)	100.0% (157)	100.0% (107)	100.0% (184)	100.0% (167)	100.0% (98)	100.0% (115)	100.0% (187)	100.0% (122)	100.0% (191)	100.0% (214)	100.0% (65)

The Economist/YouGov Poll

December 18-21 2010



8. Best candidate for Person of the Year

These individuals or groups were finalists for the title of Person of the Year. Who do you think deserves the title the most?

	Total	Age			Race			Gender		Education		
		18-29	30-64	65+	White	Black	Hispanic	Male	Female	HS or Less	Some College	College Grad
Facebook CEO												
Mark Zuckerberg	16.9%	25.7%	15.5%	7.2%	16.1%	24.5%	14.8%	15.1%	18.4%	15.8%	15.4%	20.4%
The Tea Party	23.1%	14.7%	22.8%	38.1%	26.5%	6.7%	12.4%	28.2%	18.6%	21.5%	21.6%	27.7%
WikiLeaks founder												
Julian Assange	8.4%	15.9%	6.3%	3.1%	8.7%	6.0%	8.3%	11.6%	5.4%	4.8%	12.0%	10.0%
Afghan President												
Hamid Karzai	0.5%	2.0%	0.0%	0.0%	0.6%	0.0%	0.9%	0.4%	0.7%	0.4%	1.2%	0.0%
The Chilean												
Miners	11.8%	5.7%	14.5%	12.6%	11.5%	13.4%	12.8%	9.5%	13.9%	11.2%	13.9%	10.3%
Apple CEO Steve												
Jobs	6.2%	8.7%	5.7%	4.2%	6.3%	7.2%	4.3%	7.2%	5.3%	4.5%	4.9%	10.7%
Other	6.6%	4.7%	5.9%	12.1%	6.5%	8.1%	5.5%	6.6%	6.6%	5.4%	7.8%	7.0%
Not sure	26.5%	22.7%	29.4%	22.7%	24.0%	34.2%	41.0%	21.4%	31.1%	36.4%	23.2%	14.0%
Totals (Unweighted)	100.0% (998)	100.0% (240)	100.0% (607)	100.0% (151)	100.0% (788)	100.0% (110)	100.0% (100)	100.0% (466)	100.0% (532)	100.0% (438)	100.0% (323)	100.0% (237)

	Total	Party ID			Ideology			Region				Family Income		
		Dem	Rep	Ind	Lib	Mod	Con	Northeast	Midwest	South	West	Under 40	40-100	100+
Facebook CEO														
Mark Zuckerberg	16.9%	24.6%	10.4%	15.2%	28.9%	18.5%	10.3%	20.7%	19.5%	15.1%	14.0%	16.8%	18.0%	16.7%
The Tea Party	23.1%	4.7%	52.9%	23.2%	4.4%	13.0%	52.6%	17.9%	22.8%	25.6%	23.8%	16.3%	26.4%	32.0%
WikiLeaks founder														
Julian Assange	8.4%	11.0%	1.2%	13.6%	22.8%	9.3%	1.7%	8.1%	8.2%	6.0%	12.1%	7.4%	8.3%	11.7%
Afghan President														
Hamid Karzai	0.5%	0.9%	0.4%	0.3%	0.9%	0.0%	0.7%	0.6%	1.0%	0.5%	0.2%	0.9%	0.5%	0.0%
The Chilean														
Miners	11.8%	15.9%	8.0%	12.2%	15.0%	14.8%	9.0%	13.2%	10.4%	13.2%	10.0%	10.5%	14.3%	10.1%
Apple CEO Steve														
Jobs	6.2%	7.8%	5.4%	5.4%	7.3%	8.3%	3.7%	7.7%	5.3%	5.6%	6.9%	4.4%	6.5%	12.7%
Other	6.6%	7.7%	5.3%	8.0%	6.1%	9.2%	5.8%	4.6%	6.8%	8.1%	5.7%	7.5%	6.0%	5.7%
Not sure	26.5%	27.5%	16.5%	22.2%	14.7%	26.8%	16.3%	27.3%	26.0%	25.9%	27.4%	36.2%	20.0%	11.1%

continued on the next page . . .

The Economist/YouGov Poll

December 18-21 2010



continued from previous page

	Total	Party ID			Ideology			Region				Family Income		
		Dem	Rep	Ind	Lib	Mod	Con	Northeast	Midwest	South	West	Under 40	40-100	100+
Totals (Unweighted)	100.0% (998)	100.0% (355)	100.0% (253)	100.0% (281)	100.0% (210)	100.0% (344)	100.0% (320)	100.0% (192)	100.0% (226)	100.0% (345)	100.0% (235)	100.0% (367)	100.0% (408)	100.0% (126)

The Economist/YouGov Poll

December 18-21 2010



9. Uncomfortable using this technology

In general, how comfortable do you feel...

	Total	Age			Race			Gender		Education		
		18-29	30-64	65+	White	Black	Hispanic	Male	Female	HS or Less	Some College	College Grad
Using computers	6.9%	7.5%	5.7%	10.2%	6.5%	8.5%	8.6%	7.3%	6.6%	7.1%	7.6%	5.7%
Using email	7.7%	7.2%	6.7%	12.3%	7.1%	11.1%	9.5%	8.3%	7.3%	8.8%	8.5%	5.0%
Using the internet	8.6%	7.5%	7.8%	13.1%	7.9%	12.9%	9.4%	7.4%	9.6%	9.0%	10.7%	5.4%
Totals	(1,000)	(240)	(608)	(152)	(789)	(111)	(100)	(467)	(533)	(440)	(323)	(237)

	Total	Party ID			Ideology			Region				Family Income		
		Dem	Rep	Ind	Lib	Mod	Con	Northeast	Midwest	South	West	Under 40	40-100	100+
Using computers	6.9%	5.8%	8.5%	7.4%	9.2%	4.5%	8.1%	7.6%	8.5%	7.9%	3.5%	5.2%	7.4%	3.7%
Using email	7.7%	6.3%	10.4%	7.5%	9.1%	6.1%	9.5%	6.9%	7.7%	11.0%	3.7%	6.6%	7.5%	5.8%
Using the internet	8.6%	8.0%	9.6%	8.3%	10.4%	6.1%	9.2%	10.6%	10.7%	9.8%	3.2%	8.0%	8.2%	4.5%
Totals	(1,000)	(356)	(254)	(281)	(211)	(345)	(320)	(192)	(227)	(346)	(235)	(368)	(409)	(126)

The Economist/YouGov Poll

December 18-21 2010



10. Comfortable using this technology

In general, how comfortable do you feel...

	Total	Age			Race			Gender		Education		
		18-29	30-64	65+	White	Black	Hispanic	Male	Female	HS or Less	Some College	College Grad
Using computers	86.7%	87.6%	88.0%	80.6%	87.5%	86.3%	80.1%	87.2%	86.3%	83.7%	88.0%	90.3%
Using email	87.0%	88.2%	88.3%	80.1%	88.3%	82.3%	80.1%	85.7%	88.1%	82.5%	86.7%	94.7%
Using the internet	85.0%	87.1%	86.3%	76.9%	86.2%	80.8%	78.6%	86.2%	83.9%	80.3%	85.0%	92.8%
Totals	(1,000)	(240)	(608)	(152)	(789)	(111)	(100)	(467)	(533)	(440)	(323)	(237)

	Total	Party ID			Ideology			Region				Family Income		
		Dem	Rep	Ind	Lib	Mod	Con	Northeast	Midwest	South	West	Under 40	40-100	100+
Using computers	86.7%	89.7%	87.2%	84.6%	85.2%	91.3%	87.0%	84.9%	86.4%	86.2%	89.0%	86.7%	86.2%	94.2%
Using email	87.0%	90.1%	86.3%	85.1%	88.5%	90.5%	86.0%	86.8%	89.1%	83.4%	90.3%	87.5%	87.3%	92.4%
Using the internet	85.0%	86.2%	84.4%	86.8%	85.0%	89.9%	86.4%	82.6%	86.1%	83.4%	87.9%	80.8%	87.9%	94.5%
Totals	(1,000)	(356)	(254)	(281)	(211)	(345)	(320)	(192)	(227)	(346)	(235)	(368)	(409)	(126)

11. Social networking use

How often do use online social networking Web sites like Facebook or MySpace?

	Total	Age			Race			Gender		Education		
		18-29	30-64	65+	White	Black	Hispanic	Male	Female	HS or Less	Some College	College Grad
Very often	32.7%	52.4%	29.8%	11.2%	32.4%	27.1%	43.3%	27.7%	37.3%	29.2%	34.3%	36.7%
Somewhat often	19.0%	21.4%	21.1%	8.1%	18.9%	21.3%	17.8%	19.7%	18.5%	17.8%	20.1%	19.9%
Not very often	23.2%	14.6%	22.7%	38.5%	23.6%	21.9%	20.7%	24.7%	21.8%	22.4%	23.6%	24.0%
Never	25.1%	11.7%	26.4%	42.2%	25.2%	29.7%	18.1%	28.0%	22.5%	30.6%	22.0%	19.4%
Totals	100.0%	100.0%	100.0%	100.0%	100.0%	100.0%	100.0%	100.0%	100.0%	100.0%	100.0%	100.0%
(Unweighted)	(998)	(239)	(608)	(151)	(787)	(111)	(100)	(466)	(532)	(438)	(323)	(237)

	Total	Party ID			Ideology			Region				Family Income		
		Dem	Rep	Ind	Lib	Mod	Con	Northeast	Midwest	South	West	Under 40	40-100	100+
Very often	32.7%	34.8%	32.6%	30.8%	40.2%	31.1%	29.8%	32.7%	30.6%	31.6%	36.4%	34.4%	32.3%	34.4%
Somewhat often	19.0%	20.3%	18.7%	18.8%	23.0%	17.8%	18.6%	20.3%	16.2%	19.8%	19.7%	21.2%	16.9%	21.1%
Not very often	23.2%	21.3%	24.9%	24.6%	20.1%	25.2%	24.2%	24.7%	24.6%	21.5%	23.2%	21.2%	25.7%	21.1%
Never	25.1%	23.6%	23.9%	25.7%	16.7%	25.9%	27.4%	22.4%	28.6%	27.2%	20.6%	23.3%	25.0%	23.4%
Totals	100.0%	100.0%	100.0%	100.0%	100.0%	100.0%	100.0%	100.0%	100.0%	100.0%	100.0%	100.0%	100.0%	100.0%
(Unweighted)	(998)	(356)	(253)	(280)	(211)	(345)	(319)	(192)	(227)	(344)	(235)	(367)	(409)	(125)

The Economist/YouGov Poll

December 18-21 2010



12. Impact of social networking on own life

Have social networking Web sites like Facebook and MySpace had a positive or negative effect on your life?

	Total	Age			Race			Gender		Education		
		18-29	30-64	65+	White	Black	Hispanic	Male	Female	HS or Less	Some College	College Grad
Very positive	12.0%	13.3%	14.3%	2.2%	11.6%	13.9%	13.1%	9.9%	13.9%	9.7%	13.4%	14.2%
Somewhat positive	22.6%	36.5%	20.0%	9.0%	23.5%	11.4%	28.1%	22.0%	23.1%	17.7%	24.6%	28.3%
Neither positive, nor negative	49.9%	34.4%	49.9%	74.8%	49.6%	58.0%	42.1%	51.8%	48.2%	56.5%	46.9%	42.3%
Somewhat negative	6.2%	8.7%	5.5%	4.6%	6.6%	4.4%	4.3%	6.3%	6.1%	4.3%	7.4%	7.9%
Very negative	2.7%	1.9%	3.0%	2.6%	2.3%	2.5%	6.8%	2.6%	2.7%	3.9%	1.9%	1.5%
Not sure	6.7%	5.2%	7.3%	6.9%	6.4%	9.9%	5.6%	7.4%	6.0%	7.9%	5.7%	5.8%
Totals (Unweighted)	100.0% (997)	100.0% (238)	100.0% (607)	100.0% (152)	100.0% (786)	100.0% (111)	100.0% (100)	100.0% (464)	100.0% (533)	100.0% (437)	100.0% (323)	100.0% (237)

	Total	Party ID			Ideology			Region				Family Income		
		Dem	Rep	Ind	Lib	Mod	Con	Northeast	Midwest	South	West	Under 40	40-100	100+
Very positive	12.0%	14.8%	11.1%	10.6%	15.3%	13.5%	8.7%	12.4%	9.9%	12.3%	13.3%	13.3%	10.8%	15.8%
Somewhat positive	22.6%	22.4%	21.3%	27.5%	29.5%	19.0%	24.6%	22.1%	22.1%	21.6%	24.9%	19.1%	24.5%	26.4%
Neither positive, nor negative	49.9%	47.3%	54.4%	47.0%	42.3%	53.2%	52.2%	51.2%	52.4%	49.8%	46.6%	54.9%	47.4%	44.0%
Somewhat negative	6.2%	7.2%	5.9%	5.5%	6.7%	6.9%	6.1%	6.9%	7.7%	3.4%	8.3%	3.9%	7.4%	6.3%
Very negative	2.7%	2.8%	1.5%	2.3%	1.8%	1.2%	2.9%	0.9%	2.3%	5.2%	0.7%	3.9%	1.5%	2.9%
Not sure	6.7%	5.4%	5.8%	7.1%	4.4%	6.3%	5.5%	6.5%	5.7%	7.7%	6.3%	4.9%	8.4%	4.5%
Totals (Unweighted)	100.0% (997)	100.0% (355)	100.0% (253)	100.0% (280)	100.0% (210)	100.0% (344)	100.0% (320)	100.0% (191)	100.0% (227)	100.0% (344)	100.0% (235)	100.0% (366)	100.0% (408)	100.0% (126)

The Economist/YouGov Poll

December 18-21 2010



13. Impact of social networking on society

Thinking about society in general, has the effect of social networking Web sites like Facebook and MySpace been positive or negative?

	Total	Age			Race			Gender		Education		
		18-29	30-64	65+	White	Black	Hispanic	Male	Female	HS or Less	Some College	College Grad
Very positive	11.2%	13.9%	12.3%	3.2%	10.1%	18.8%	12.3%	9.8%	12.5%	10.3%	11.3%	12.7%
Somewhat positive	26.0%	25.4%	27.9%	20.5%	27.0%	21.4%	23.0%	27.2%	24.9%	22.4%	25.8%	32.5%
Neither positive, nor negative	25.2%	24.9%	23.9%	30.2%	24.7%	25.9%	29.3%	22.2%	27.9%	29.9%	26.0%	16.4%
Somewhat negative	22.7%	23.0%	22.1%	24.0%	24.0%	16.0%	18.0%	26.1%	19.5%	17.8%	24.8%	28.2%
Very negative	7.6%	5.4%	7.5%	11.7%	7.8%	6.6%	7.1%	8.4%	6.9%	8.9%	5.7%	7.8%
Not sure	7.2%	7.4%	6.3%	10.4%	6.4%	11.3%	10.3%	6.2%	8.2%	10.7%	6.4%	2.4%
Totals (Unweighted)	100.0% (999)	100.0% (239)	100.0% (608)	100.0% (152)	100.0% (788)	100.0% (111)	100.0% (100)	100.0% (467)	100.0% (532)	100.0% (439)	100.0% (323)	100.0% (237)

	Total	Party ID			Ideology			Region				Family Income		
		Dem	Rep	Ind	Lib	Mod	Con	Northeast	Midwest	South	West	Under 40	40-100	100+
Very positive	11.2%	16.3%	7.5%	9.4%	16.1%	12.0%	7.2%	11.5%	10.1%	11.4%	11.8%	12.3%	10.4%	14.9%
Somewhat positive	26.0%	26.6%	29.0%	26.1%	31.6%	23.9%	29.7%	26.1%	19.7%	28.5%	28.3%	20.7%	29.1%	35.5%
Neither positive, nor negative	25.2%	27.5%	21.4%	22.3%	17.6%	30.3%	20.8%	28.8%	27.2%	23.1%	23.8%	31.7%	22.9%	15.4%
Somewhat negative	22.7%	17.8%	28.7%	27.5%	23.8%	22.4%	28.5%	23.2%	30.5%	21.0%	17.4%	19.8%	24.0%	24.9%
Very negative	7.6%	6.5%	7.0%	9.0%	7.2%	7.7%	8.3%	4.4%	7.7%	8.3%	9.0%	7.3%	7.5%	5.3%
Not sure	7.2%	5.3%	6.5%	5.6%	3.7%	3.7%	5.6%	6.0%	4.8%	7.8%	9.7%	8.2%	6.1%	3.9%
Totals (Unweighted)	100.0% (999)	100.0% (356)	100.0% (253)	100.0% (281)	100.0% (211)	100.0% (345)	100.0% (319)	100.0% (192)	100.0% (227)	100.0% (346)	100.0% (234)	100.0% (368)	100.0% (408)	100.0% (126)

The Economist/YouGov Poll

December 18-21 2010



14. Payments for priority Web transmission

Should companies be allowed to pay Internet Service Providers so that the transmission times for Web content are faster for companies who pay and slower for companies who don't pay?

	Total	Age			Race			Gender		Education		
		18-29	30-64	65+	White	Black	Hispanic	Male	Female	HS or Less	Some College	College Grad
Yes	16.4%	18.1%	17.3%	10.6%	16.2%	16.5%	18.2%	20.2%	13.0%	14.5%	14.3%	22.3%
No	53.9%	55.0%	53.0%	55.5%	55.9%	43.5%	48.5%	57.5%	50.7%	46.9%	59.2%	59.7%
Not sure	29.6%	26.9%	29.7%	33.8%	27.9%	40.0%	33.2%	22.4%	36.2%	38.7%	26.5%	18.1%
Totals (Unweighted)	100.0% (998)	100.0% (240)	100.0% (607)	100.0% (151)	100.0% (788)	100.0% (111)	100.0% (99)	100.0% (467)	100.0% (531)	100.0% (440)	100.0% (322)	100.0% (236)

	Total	Party ID			Ideology			Region				Family Income		
		Dem	Rep	Ind	Lib	Mod	Con	Northeast	Midwest	South	West	Under 40	40-100	100+
Yes	16.4%	13.6%	22.3%	14.8%	13.0%	15.2%	23.3%	17.4%	17.9%	17.4%	12.8%	13.1%	19.7%	20.1%
No	53.9%	57.3%	52.8%	57.4%	67.4%	59.3%	50.3%	54.9%	53.4%	56.1%	50.7%	49.8%	55.4%	60.8%
Not sure	29.6%	29.1%	24.9%	27.8%	19.6%	25.5%	26.5%	27.7%	28.7%	26.5%	36.5%	37.1%	24.9%	19.1%
Totals (Unweighted)	100.0% (998)	100.0% (356)	100.0% (253)	100.0% (281)	100.0% (210)	100.0% (345)	100.0% (320)	100.0% (192)	100.0% (226)	100.0% (345)	100.0% (235)	100.0% (366)	100.0% (409)	100.0% (126)

The Economist/YouGov Poll

December 18-21 2010



15. A great deal or some trust in organizations to decide on regulation of Internet

How much do you trust the following organizations to decide how access to the Internet is controlled?

	Total	Age			Race			Gender		Education		
		18-29	30-64	65+	White	Black	Hispanic	Male	Female	HS or Less	Some College	College Grad
Internet Service Providers like AT&T, Comcast, and Verizon	36.4%	34.2%	34.2%	47.5%	36.3%	40.2%	32.5%	34.5%	38.1%	37.6%	36.9%	33.7%
Software companies like Microsoft or Apple	40.0%	36.5%	38.8%	49.6%	39.0%	49.6%	36.9%	38.8%	41.0%	41.5%	42.8%	34.0%
Web site companies like Google or Yahoo	40.3%	40.2%	40.3%	40.3%	39.9%	48.1%	34.5%	43.0%	37.9%	40.4%	43.9%	35.9%
The Federal Communications Commission (FCC)	34.1%	32.8%	33.6%	37.9%	33.2%	42.2%	32.5%	34.0%	34.2%	31.3%	34.0%	38.9%
Republicans in Congress	17.8%	18.2%	17.8%	17.5%	17.9%	11.3%	25.2%	21.1%	15.0%	17.1%	18.7%	18.1%
Democrats in Congress	20.2%	21.5%	19.9%	18.8%	18.3%	32.5%	22.4%	21.0%	19.4%	16.6%	21.8%	24.1%
Independent Internet experts	42.6%	46.5%	41.9%	39.0%	43.9%	37.9%	36.9%	49.1%	36.8%	36.5%	46.6%	48.2%
Totals	(1,000)	(240)	(608)	(152)	(789)	(111)	(100)	(467)	(533)	(440)	(323)	(237)

	Total	Party ID			Ideology			Region				Family Income		
		Dem	Rep	Ind	Lib	Mod	Con	Northeast	Midwest	South	West	Under 40	40-100	100+
Internet Service Providers like AT&T, Comcast, and Verizon	36.4%	34.9%	48.0%	28.5%	27.9%	35.4%	47.6%	35.9%	40.3%	35.2%	34.9%	38.8%	33.9%	40.4%
Software companies like Microsoft or Apple	40.0%	42.8%	43.9%	35.3%	35.5%	40.3%	47.4%	39.3%	42.8%	36.7%	42.5%	43.6%	39.7%	40.7%

continued on the next page . . .

The Economist/YouGov Poll

December 18-21 2010



continued from previous page

	Total	Party ID			Ideology			Region				Family Income		
		Dem	Rep	Ind	Lib	Mod	Con	Northeast	Midwest	South	West	Under 40	40-100	100+
Web site companies like Google or Yahoo	40.3%	43.7%	40.4%	37.2%	44.3%	40.6%	40.4%	40.1%	43.5%	37.4%	41.7%	43.8%	40.6%	38.9%
The Federal Communications Commission (FCC)	34.1%	45.5%	27.4%	31.4%	46.4%	40.7%	25.1%	36.9%	34.3%	33.9%	32.1%	34.0%	34.7%	42.7%
Republicans in Congress	17.8%	12.4%	31.9%	14.6%	10.1%	15.9%	29.6%	18.9%	13.2%	18.8%	20.0%	17.0%	16.1%	27.8%
Democrats in Congress	20.2%	37.7%	7.6%	15.6%	40.2%	25.2%	8.5%	22.0%	18.7%	19.7%	20.8%	21.0%	20.7%	24.6%
Independent Internet experts	42.6%	45.5%	43.2%	45.0%	52.9%	46.2%	44.4%	44.0%	38.1%	42.1%	46.7%	35.0%	46.8%	54.4%
Totals	(1,000)	(356)	(254)	(281)	(211)	(345)	(320)	(192)	(227)	(346)	(235)	(368)	(409)	(126)

The Economist/YouGov Poll

December 18-21 2010



16. Only a little or no trust in organizations to decide on regulation of Internet

How much do you trust the following organizations to decide how access to the Internet is controlled?

	Total	Age			Race			Gender		Education		
		18-29	30-64	65+	White	Black	Hispanic	Male	Female	HS or Less	Some College	College Grad
Internet Service Providers like AT&T, Comcast, and Verizon	48.6%	47.5%	51.1%	41.6%	50.4%	38.3%	44.6%	54.6%	43.1%	40.0%	51.5%	59.5%
Software companies like Microsoft or Apple	44.7%	45.9%	45.6%	39.9%	47.5%	27.0%	41.0%	50.4%	39.7%	36.0%	44.8%	59.3%
Web site companies like Google or Yahoo	44.8%	41.8%	45.1%	48.9%	47.0%	31.1%	41.6%	46.0%	43.8%	37.0%	45.8%	56.8%
The Federal Communications Commission (FCC)	50.2%	47.0%	51.6%	51.0%	53.0%	35.1%	43.0%	57.0%	44.1%	46.2%	52.9%	53.9%
Republicans in Congress	67.3%	60.1%	68.6%	74.5%	69.8%	61.4%	51.0%	68.3%	66.4%	61.1%	68.9%	75.7%
Democrats in Congress	64.3%	57.9%	65.6%	70.0%	68.5%	42.4%	52.0%	67.8%	61.1%	61.0%	66.1%	67.6%
Independent Internet experts	35.4%	30.6%	37.4%	36.0%	35.8%	31.6%	35.8%	35.4%	35.3%	33.8%	35.8%	37.5%
Totals	(1,000)	(240)	(608)	(152)	(789)	(111)	(100)	(467)	(533)	(440)	(323)	(237)

	Total	Party ID			Ideology			Region				Family Income		
		Dem	Rep	Ind	Lib	Mod	Con	Northeast	Midwest	South	West	Under 40	40-100	100+
Internet Service Providers like AT&T, Comcast, and Verizon	48.6%	50.0%	42.9%	56.1%	58.7%	54.2%	42.2%	46.8%	45.6%	52.6%	46.8%	43.0%	53.5%	49.9%
Software companies like Microsoft or Apple	44.7%	41.3%	46.7%	51.0%	52.7%	48.0%	43.0%	42.9%	42.9%	50.8%	39.1%	37.9%	47.8%	48.3%

continued on the next page . . .

The Economist/YouGov Poll

December 18-21 2010



continued from previous page

	Total	Party ID			Ideology			Region				Family Income		
		Dem	Rep	Ind	Lib	Mod	Con	Northeast	Midwest	South	West	Under 40	40-100	100+
Web site companies like Google or Yahoo	44.8%	41.3%	48.8%	49.6%	44.1%	48.6%	48.8%	42.2%	43.3%	50.8%	39.5%	39.9%	46.6%	51.1%
The Federal Communications Commission (FCC)	50.2%	36.3%	63.4%	57.8%	39.4%	47.4%	65.8%	47.2%	49.6%	53.2%	48.8%	46.4%	53.3%	47.0%
Republicans in Congress	67.3%	70.9%	61.1%	74.2%	78.6%	71.6%	63.4%	64.5%	72.6%	67.4%	64.2%	63.5%	71.9%	62.9%
Democrats in Congress	64.3%	44.0%	83.5%	73.7%	47.6%	61.4%	83.3%	60.9%	65.7%	66.0%	63.0%	59.4%	67.3%	63.3%
Independent Internet experts	35.4%	31.8%	41.6%	36.5%	29.1%	37.9%	39.1%	32.3%	37.5%	38.4%	31.1%	39.2%	33.9%	31.2%
Totals	(1,000)	(356)	(254)	(281)	(211)	(345)	(320)	(192)	(227)	(346)	(235)	(368)	(409)	(126)

The Economist/YouGov Poll

December 18-21 2010



17. Knowledge of net neutrality

Are you familiar with the term "net neutrality"?

	Total	Age			Race			Gender		Education		
		18-29	30-64	65+	White	Black	Hispanic	Male	Female	HS or Less	Some College	College Grad
Yes, I am familiar with "net neutrality."	25.0%	29.3%	24.5%	19.5%	26.9%	15.5%	18.4%	36.6%	14.5%	15.1%	28.8%	37.1%
Yes, I've heard of it, but I don't understand it.	22.3%	24.7%	21.4%	21.7%	22.8%	18.2%	22.4%	25.1%	19.8%	16.8%	26.3%	26.8%
No, I have not heard of it.	52.7%	46.0%	54.1%	58.8%	50.2%	66.3%	59.2%	38.3%	65.6%	68.1%	44.9%	36.1%
Totals (Unweighted)	100.0% (998)	100.0% (238)	100.0% (608)	100.0% (152)	100.0% (788)	100.0% (110)	100.0% (100)	100.0% (465)	100.0% (533)	100.0% (438)	100.0% (323)	100.0% (237)

	Total	Party ID			Ideology			Region				Family Income		
		Dem	Rep	Ind	Lib	Mod	Con	Northeast	Midwest	South	West	Under 40	40-100	100+
Yes, I am familiar with "net neutrality."	25.0%	21.6%	26.9%	34.7%	41.1%	23.8%	26.4%	25.1%	24.6%	23.2%	28.0%	17.5%	28.0%	39.9%
Yes, I've heard of it, but I don't understand it.	22.3%	20.0%	26.2%	24.0%	22.0%	23.1%	27.1%	20.9%	22.6%	24.0%	20.7%	18.9%	24.6%	25.8%
No, I have not heard of it.	52.7%	58.4%	46.9%	41.3%	37.0%	53.0%	46.5%	54.0%	52.9%	52.8%	51.4%	63.6%	47.4%	34.3%
Totals (Unweighted)	100.0% (998)	100.0% (354)	100.0% (254)	100.0% (281)	100.0% (210)	100.0% (344)	100.0% (320)	100.0% (190)	100.0% (227)	100.0% (346)	100.0% (235)	100.0% (368)	100.0% (408)	100.0% (126)

The Economist/YouGov Poll

December 18-21 2010



18. Support for net neutrality

“Net neutrality” is the principle that all Internet traffic should be treated equally. Supporters believe that it is necessary to ensure that the Internet remains free and open and that there is an even playing field for competition and innovation. Opponents believe that the ability to charge for priority Internet service will encourage investment in more advanced infrastructure for the Internet and could prevent the transmission of e-mail spam. Do you support or oppose the principle of “net neutrality”?

	Total	Age			Race			Gender		Education		
		18-29	30-64	65+	White	Black	Hispanic	Male	Female	HS or Less	Some College	College Grad
Strongly support	34.7%	37.1%	33.9%	33.6%	35.4%	34.5%	28.6%	38.2%	31.6%	29.9%	36.1%	41.1%
Somewhat support	21.8%	19.1%	22.4%	23.8%	22.6%	21.2%	14.3%	21.6%	21.9%	20.6%	24.1%	21.0%
Neither support, nor oppose	15.8%	19.8%	13.9%	15.6%	14.7%	15.5%	26.6%	14.5%	17.0%	18.3%	16.9%	10.2%
Somewhat oppose	7.0%	8.4%	6.7%	5.5%	7.2%	7.2%	4.6%	9.3%	4.9%	7.6%	5.0%	8.2%
Strongly oppose	7.9%	4.5%	9.8%	6.6%	8.5%	4.8%	5.9%	8.4%	7.3%	5.5%	8.0%	11.6%
Not sure	12.9%	10.9%	13.3%	14.9%	11.6%	16.9%	19.9%	8.0%	17.3%	18.1%	9.8%	7.9%
Totals (Unweighted)	100.0% (1,000)	100.0% (240)	100.0% (608)	100.0% (152)	100.0% (789)	100.0% (111)	100.0% (100)	100.0% (467)	100.0% (533)	100.0% (440)	100.0% (323)	100.0% (237)

	Total	Party ID			Ideology			Region				Family Income		
		Dem	Rep	Ind	Lib	Mod	Con	Northeast	Midwest	South	West	Under 40	40-100	100+
Strongly support	34.7%	44.6%	23.5%	39.3%	56.7%	36.8%	28.5%	32.3%	36.3%	34.2%	35.7%	32.2%	36.9%	40.1%
Somewhat support	21.8%	21.2%	24.0%	21.5%	20.7%	28.4%	19.9%	24.4%	24.6%	21.2%	18.0%	21.9%	22.9%	19.4%
Neither support, nor oppose	15.8%	15.8%	15.0%	15.4%	7.6%	16.5%	13.2%	16.9%	14.4%	15.4%	16.8%	20.6%	11.6%	10.5%
Somewhat oppose	7.0%	3.5%	13.2%	4.6%	4.3%	5.2%	10.9%	8.7%	6.3%	6.3%	7.3%	6.5%	8.2%	6.1%
Strongly oppose	7.9%	4.5%	13.1%	8.5%	2.6%	6.0%	15.2%	9.0%	7.4%	9.5%	4.9%	2.9%	10.7%	14.6%
Not sure	12.9%	10.4%	11.1%	10.7%	8.1%	7.1%	12.2%	8.6%	10.9%	13.4%	17.3%	15.9%	9.7%	9.4%
Totals (Unweighted)	100.0% (1,000)	100.0% (356)	100.0% (254)	100.0% (281)	100.0% (211)	100.0% (345)	100.0% (320)	100.0% (192)	100.0% (227)	100.0% (346)	100.0% (235)	100.0% (368)	100.0% (409)	100.0% (126)

The Economist/YouGov Poll

December 18-21 2010



19. Support the following pieces of legislation

Congress is considering some of the following policies. Which do you support?

	Total	Age			Race			Gender		Education		
		18-29	30-64	65+	White	Black	Hispanic	Male	Female	HS or Less	Some College	College Grad
Ratification of the START treaty to reduce American and Russian nuclear stockpiles	49.4%	45.9%	51.1%	49.3%	49.2%	48.4%	52.3%	53.8%	45.4%	39.4%	52.5%	62.4%
The DREAM Act, to allow immigrant students who arrived illegally as minors to apply for temporary legal status if enrolled in college or the military	38.3%	50.8%	33.8%	33.5%	36.6%	43.6%	48.1%	37.9%	38.6%	28.1%	43.0%	49.8%
A ban on Members of Congress directing spending projects to their own states or districts, known as "earmarks"	60.5%	54.5%	62.3%	63.8%	62.8%	49.6%	52.2%	64.1%	57.2%	51.5%	62.9%	72.8%
Increase in government regulation of food safety	59.3%	53.6%	60.9%	63.1%	58.0%	72.9%	54.1%	56.3%	62.0%	55.7%	60.9%	63.3%
Repeal of the ban on internet gambling	27.9%	33.0%	27.5%	21.3%	27.9%	28.7%	27.3%	32.9%	23.4%	25.5%	28.1%	31.8%

continued on the next page . . .

The Economist/YouGov Poll

December 18-21 2010



	continued from previous page												
	Total	Age			Race			Gender		Education			
	18-29	30-64	65+	White	Black	Hispanic	Male	Female	HS or Less	Some College	College Grad		
Repeal of "Don't ask, don't tell" to allow openly gay men and women to serve in the military	48.2%	52.6%	47.5%	43.3%	48.0%	48.6%	48.9%	46.6%	49.6%	39.8%	50.5%	59.4%	
Totals	(1,000)	(240)	(608)	(152)	(789)	(111)	(100)	(467)	(533)	(440)	(323)	(237)	

	continued from previous page													
	Total	Party ID			Ideology			Region				Family Income		
	Dem	Rep	Ind	Lib	Mod	Con	Northeast	Midwest	South	West	Under 40	40-100	100+	
Ratification of the START treaty to reduce American and Russian nuclear stockpiles	49.4%	68.9%	29.3%	55.6%	82.5%	61.1%	27.4%	55.3%	45.8%	49.7%	47.8%	43.2%	54.8%	57.5%
The DREAM Act, to allow immigrant students who arrived illegally as minors to apply for temporary legal status if enrolled in college or the military	38.3%	58.0%	18.0%	42.3%	72.0%	46.2%	19.5%	33.8%	36.9%	39.4%	41.3%	34.7%	40.5%	45.1%
A ban on Members of Congress directing spending projects to their own states or districts, known as "earmarks"	60.5%	56.9%	68.7%	66.5%	61.1%	62.6%	70.8%	61.5%	61.9%	57.6%	62.6%	51.9%	68.0%	66.7%

continued on the next page . . .

The Economist/YouGov Poll

December 18-21 2010



continued from previous page

	Total	Party ID			Ideology			Region				Family Income		
		Dem	Rep	Ind	Lib	Mod	Con	Northeast	Midwest	South	West	Under 40	40-100	100+
Increase in government regulation of food safety	59.3%	81.6%	37.6%	59.6%	84.9%	71.2%	39.0%	63.1%	61.8%	57.8%	56.2%	59.1%	61.7%	56.2%
Repeal of the ban on internet gambling	27.9%	27.7%	26.5%	33.7%	29.8%	37.1%	25.2%	31.7%	26.3%	27.9%	26.7%	27.7%	30.5%	26.8%
Repeal of "Don't ask, don't tell" to allow openly gay men and women to serve in the military	48.2%	69.1%	28.6%	52.3%	83.7%	60.7%	22.7%	56.2%	49.7%	42.7%	48.7%	43.7%	52.5%	48.8%
Totals	(1,000)	(356)	(254)	(281)	(211)	(345)	(320)	(192)	(227)	(346)	(235)	(368)	(409)	(126)

The Economist/YouGov Poll

December 18-21 2010



20. Oppose the following pieces of legislation

Congress is considering some of the following policies. Which do you support?

	Total	Age			Race			Gender		Education		
		18-29	30-64	65+	White	Black	Hispanic	Male	Female	HS or Less	Some College	College Grad
Ratification of the START treaty to reduce American and Russian nuclear stockpiles	21.3%	19.6%	19.7%	29.6%	23.6%	14.0%	9.4%	26.6%	16.5%	23.9%	19.5%	19.2%
The DREAM Act, to allow immigrant students who arrived illegally as minors to apply for temporary legal status if enrolled in college or the military	44.8%	28.0%	49.9%	54.6%	48.3%	31.5%	28.1%	48.4%	41.6%	47.7%	43.8%	41.2%
A ban on Members of Congress directing spending projects to their own states or districts, known as "earmarks"	17.3%	13.4%	16.2%	27.5%	17.2%	17.4%	18.2%	17.1%	17.6%	20.6%	13.4%	16.4%
Increase in government regulation of food safety	20.5%	18.1%	20.5%	24.4%	22.2%	9.1%	18.6%	24.0%	17.3%	19.1%	20.7%	22.6%
Repeal of the ban on internet gambling	29.5%	23.2%	27.7%	46.1%	29.8%	27.5%	29.7%	28.8%	30.2%	28.5%	26.5%	34.8%

continued on the next page . . .

The Economist/YouGov Poll

December 18-21 2010



	continued from previous page												
	Total	Age			Race			Gender		Education			
	18-29	30-64	65+	White	Black	Hispanic	Male	Female	HS or Less	Some College	College Grad		
Repeal of "Don't ask, don't tell" to allow openly gay men and women to serve in the military	26.8%	23.6%	25.5%	36.4%	28.7%	17.1%	20.9%	32.8%	21.4%	27.5%	28.2%	24.1%	
Totals	(1,000)	(240)	(608)	(152)	(789)	(111)	(100)	(467)	(533)	(440)	(323)	(237)	

	continued from previous page													
	Total	Party ID			Ideology			Region				Family Income		
	Dem	Rep	Ind	Lib	Mod	Con	Northeast	Midwest	South	West	Under 40	40-100	100+	
Ratification of the START treaty to reduce American and Russian nuclear stockpiles	21.3%	4.9%	44.3%	23.0%	4.0%	12.3%	46.9%	14.7%	21.1%	25.6%	20.4%	18.8%	21.4%	24.6%
The DREAM Act, to allow immigrant students who arrived illegally as minors to apply for temporary legal status if enrolled in college or the military	44.8%	23.4%	70.9%	45.6%	19.3%	35.3%	72.6%	46.6%	47.8%	42.0%	44.8%	39.4%	49.1%	45.7%
A ban on Members of Congress directing spending projects to their own states or districts, known as "earmarks"	17.3%	18.1%	19.6%	14.9%	16.0%	16.6%	18.5%	15.9%	16.8%	19.1%	16.3%	20.1%	14.6%	17.0%

continued on the next page . . .

The Economist/YouGov Poll

December 18-21 2010



continued from previous page

	Total	Party ID			Ideology			Region				Family Income		
		Dem	Rep	Ind	Lib	Mod	Con	Northeast	Midwest	South	West	Under 40	40-100	100+
Increase in government regulation of food safety	20.5%	5.2%	38.8%	23.9%	3.9%	13.0%	42.8%	15.2%	20.4%	21.3%	23.5%	15.8%	22.2%	27.6%
Repeal of the ban on internet gambling	29.5%	27.8%	35.2%	30.7%	27.5%	27.1%	37.9%	23.2%	35.1%	30.9%	27.1%	26.1%	32.1%	26.4%
Repeal of "Don't ask, don't tell" to allow openly gay men and women to serve in the military	26.8%	11.9%	49.6%	26.4%	6.4%	17.3%	55.2%	17.3%	25.9%	30.9%	28.8%	23.3%	30.6%	27.1%
Totals	(1,000)	(356)	(254)	(281)	(211)	(345)	(320)	(192)	(227)	(346)	(235)	(368)	(409)	(126)

The Economist/YouGov Poll

December 18-21 2010



21. Expectations for full economic recovery

How long do you think it will take until the economy has recovered all the ground lost during the recession?

	Total	Age			Race			Gender		Education		
		18-29	30-64	65+	White	Black	Hispanic	Male	Female	HS or Less	Some College	College Grad
Has already recovered	0.6%	1.2%	0.4%	0.0%	0.2%	2.3%	1.9%	0.9%	0.3%	1.3%	0.0%	0.0%
Less than a year	4.0%	8.7%	2.8%	0.5%	2.8%	9.4%	8.3%	5.4%	2.8%	4.8%	3.6%	3.1%
About a year	8.5%	11.5%	7.5%	7.0%	7.1%	14.8%	13.3%	9.2%	7.8%	7.1%	9.5%	9.5%
Two years	18.1%	18.9%	18.7%	14.6%	18.5%	19.9%	12.4%	16.6%	19.4%	15.2%	20.8%	19.8%
More than two years	68.9%	59.6%	70.6%	77.8%	71.4%	53.6%	64.1%	67.9%	69.7%	71.6%	66.1%	67.6%
Totals (Unweighted)	100.0% (998)	100.0% (238)	100.0% (608)	100.0% (152)	100.0% (787)	100.0% (111)	100.0% (100)	100.0% (466)	100.0% (532)	100.0% (439)	100.0% (322)	100.0% (237)

	Total	Party ID			Ideology			Region				Family Income		
		Dem	Rep	Ind	Lib	Mod	Con	Northeast	Midwest	South	West	Under 40	40-100	100+
Has already recovered	0.6%	1.2%	0.0%	0.5%	0.9%	0.5%	0.3%	1.9%	0.0%	0.6%	0.0%	0.6%	0.8%	0.0%
Less than a year	4.0%	5.8%	3.4%	2.8%	4.9%	5.9%	2.3%	1.8%	4.2%	5.6%	3.2%	5.7%	3.1%	2.9%
About a year	8.5%	11.9%	5.6%	6.0%	12.9%	8.9%	4.3%	8.2%	6.0%	9.6%	9.4%	8.7%	8.5%	7.6%
Two years	18.1%	19.9%	17.5%	17.1%	21.7%	19.6%	16.6%	22.2%	15.6%	19.9%	14.7%	17.8%	17.0%	23.1%
More than two years	68.9%	61.2%	73.6%	73.7%	59.6%	65.0%	76.6%	65.8%	74.2%	64.3%	72.8%	67.2%	70.7%	66.4%
Totals (Unweighted)	100.0% (998)	100.0% (356)	100.0% (254)	100.0% (279)	100.0% (211)	100.0% (344)	100.0% (320)	100.0% (192)	100.0% (226)	100.0% (345)	100.0% (235)	100.0% (367)	100.0% (409)	100.0% (126)

The Economist/YouGov Poll

December 18-21 2010



22. Approval of tax-cut bill

Recently, Congress passed a bill with \$801 billion in tax-cuts and \$57 billion for extended unemployment insurance. Do you favor or oppose this bill?

	Total	Age			Race			Gender		Education		
		18-29	30-64	65+	White	Black	Hispanic	Male	Female	HS or Less	Some College	College Grad
Favor	44.9%	32.6%	50.3%	46.2%	43.0%	62.1%	41.0%	47.7%	42.3%	43.8%	41.9%	50.3%
Oppose	28.0%	28.6%	26.2%	33.6%	30.6%	12.6%	23.5%	30.2%	26.0%	22.7%	29.2%	35.5%
Not sure	27.1%	38.9%	23.6%	20.3%	26.4%	25.3%	35.5%	22.0%	31.6%	33.5%	28.9%	14.2%
Totals (Unweighted)	100.0% (998)	100.0% (238)	100.0% (608)	100.0% (152)	100.0% (787)	100.0% (111)	100.0% (100)	100.0% (465)	100.0% (533)	100.0% (438)	100.0% (323)	100.0% (237)

	Total	Party ID			Ideology			Region				Family Income		
		Dem	Rep	Ind	Lib	Mod	Con	Northeast	Midwest	South	West	Under 40	40-100	100+
Favor	44.9%	49.6%	51.0%	38.6%	47.9%	46.8%	48.8%	46.1%	49.5%	42.4%	43.3%	43.4%	47.6%	49.6%
Oppose	28.0%	28.1%	27.9%	33.6%	32.0%	27.2%	32.3%	25.1%	27.9%	29.6%	28.0%	18.9%	32.2%	37.1%
Not sure	27.1%	22.3%	21.1%	27.8%	20.2%	26.1%	18.9%	28.8%	22.6%	28.0%	28.7%	37.6%	20.2%	13.3%
Totals (Unweighted)	100.0% (998)	100.0% (356)	100.0% (254)	100.0% (279)	100.0% (211)	100.0% (344)	100.0% (320)	100.0% (192)	100.0% (226)	100.0% (345)	100.0% (235)	100.0% (366)	100.0% (409)	100.0% (126)

23. Impact of tax-cut bill on economy

Regardless of whether you favor or oppose the \$858 billion tax-cut bill passed by Congress, do you think it will help the economy?

	Total	Age			Race			Gender		Education		
		18-29	30-64	65+	White	Black	Hispanic	Male	Female	HS or Less	Some College	College Grad
Yes	39.9%	35.6%	41.8%	40.3%	39.7%	45.3%	35.5%	44.1%	36.1%	34.6%	42.8%	45.5%
No	32.3%	35.6%	28.9%	38.9%	33.8%	22.9%	30.4%	33.3%	31.5%	32.3%	31.3%	33.6%
Not sure	27.7%	28.7%	29.3%	20.8%	26.5%	31.7%	34.1%	22.6%	32.4%	33.2%	25.9%	20.9%
Totals (Unweighted)	100.0% (996)	100.0% (238)	100.0% (607)	100.0% (151)	100.0% (786)	100.0% (111)	100.0% (99)	100.0% (466)	100.0% (530)	100.0% (437)	100.0% (322)	100.0% (237)

	Total	Party ID			Ideology			Region				Family Income		
		Dem	Rep	Ind	Lib	Mod	Con	Northeast	Midwest	South	West	Under 40	40-100	100+
Yes	39.9%	41.1%	46.3%	38.7%	45.6%	40.4%	46.0%	37.9%	44.2%	38.9%	39.0%	37.5%	43.2%	46.7%
No	32.3%	32.9%	32.1%	34.6%	31.8%	32.2%	34.1%	28.9%	29.2%	37.6%	30.1%	30.9%	31.7%	32.1%
Not sure	27.7%	26.0%	21.5%	26.7%	22.6%	27.4%	19.9%	33.2%	26.6%	23.5%	30.9%	31.6%	25.1%	21.2%
Totals (Unweighted)	100.0% (996)	100.0% (356)	100.0% (253)	100.0% (278)	100.0% (211)	100.0% (343)	100.0% (319)	100.0% (192)	100.0% (227)	100.0% (342)	100.0% (235)	100.0% (366)	100.0% (408)	100.0% (125)

24. Impact of the tax-cut bill on job creation

Do you think the tax-cut bill will create new jobs in the U.S.?

	Total	Age			Race			Gender		Education		
		18-29	30-64	65+	White	Black	Hispanic	Male	Female	HS or Less	Some College	College Grad
Yes	23.0%	18.7%	23.9%	27.3%	22.6%	24.9%	25.1%	28.0%	18.6%	21.7%	22.4%	26.1%
No	44.6%	46.4%	43.6%	45.4%	48.4%	23.8%	34.9%	42.3%	46.7%	43.0%	43.3%	49.0%
Not sure	32.3%	34.9%	32.6%	27.4%	29.0%	51.3%	40.0%	29.7%	34.7%	35.4%	34.3%	25.0%
Totals (Unweighted)	100.0% (994)	100.0% (238)	100.0% (605)	100.0% (151)	100.0% (785)	100.0% (111)	100.0% (98)	100.0% (462)	100.0% (532)	100.0% (437)	100.0% (321)	100.0% (236)

	Total	Party ID			Ideology			Region				Family Income		
		Dem	Rep	Ind	Lib	Mod	Con	Northeast	Midwest	South	West	Under 40	40-100	100+
Yes	23.0%	21.4%	31.4%	23.4%	16.1%	22.8%	33.8%	24.0%	22.5%	20.9%	26.0%	20.6%	23.8%	34.3%
No	44.6%	42.7%	43.2%	48.3%	52.0%	44.0%	44.3%	41.5%	46.4%	47.7%	40.9%	42.9%	44.4%	46.0%
Not sure	32.3%	36.0%	25.4%	28.3%	31.9%	33.2%	21.9%	34.5%	31.1%	31.4%	33.1%	36.5%	31.8%	19.7%
Totals (Unweighted)	100.0% (994)	100.0% (353)	100.0% (253)	100.0% (280)	100.0% (209)	100.0% (343)	100.0% (320)	100.0% (192)	100.0% (225)	100.0% (342)	100.0% (235)	100.0% (364)	100.0% (409)	100.0% (126)

The Economist/YouGov Poll

December 18-21 2010



25. These groups are concerned about issues affecting poor people

How concerned are the following groups about issues that affect poor people?

	Total	Age			Race			Gender		Education		
		18-29	30-64	65+	White	Black	Hispanic	Male	Female	HS or Less	Some College	College Grad
The Obama Administration	57.2%	55.5%	57.9%	57.6%	55.0%	72.4%	58.8%	59.5%	55.1%	52.6%	54.7%	67.8%
The Republican Party	36.6%	32.1%	38.2%	38.1%	38.2%	31.6%	27.8%	38.5%	34.8%	37.3%	35.4%	36.8%
The Democratic Party	56.8%	56.1%	57.6%	54.8%	54.2%	75.9%	56.7%	58.9%	54.9%	49.5%	55.1%	70.9%
Totals	(1,000)	(240)	(608)	(152)	(789)	(111)	(100)	(467)	(533)	(440)	(323)	(237)

	Total	Party ID			Ideology			Region				Family Income		
		Dem	Rep	Ind	Lib	Mod	Con	Northeast	Midwest	South	West	Under 40	40-100	100+
The Obama Administration	57.2%	77.7%	44.9%	55.0%	80.6%	69.2%	44.4%	64.8%	55.2%	53.7%	58.4%	55.2%	59.9%	62.5%
The Republican Party	36.6%	20.2%	68.6%	30.7%	13.1%	31.0%	63.6%	40.5%	37.9%	37.9%	30.4%	31.6%	38.6%	40.8%
The Democratic Party	56.8%	80.5%	44.0%	51.7%	84.8%	67.5%	43.0%	64.2%	54.7%	52.6%	59.2%	52.1%	61.5%	61.2%
Totals	(1,000)	(356)	(254)	(281)	(211)	(345)	(320)	(192)	(227)	(346)	(235)	(368)	(409)	(126)

The Economist/YouGov Poll

December 18-21 2010



26. These groups are not concerned about issues affecting poor people

How concerned are the following groups about issues that affect poor people?

	Total	Age			Race			Gender		Education		
		18-29	30-64	65+	White	Black	Hispanic	Male	Female	HS or Less	Some College	College Grad
The Obama Administration	31.5%	26.2%	33.3%	33.9%	33.7%	20.8%	24.3%	34.4%	28.9%	32.2%	32.4%	29.3%
The Republican Party	51.3%	47.8%	51.9%	55.1%	49.8%	60.0%	55.1%	55.0%	48.1%	44.9%	51.7%	61.6%
The Democratic Party	31.7%	25.3%	33.4%	36.0%	33.9%	18.8%	27.2%	34.9%	28.8%	34.2%	32.0%	27.0%
Totals	(1,000)	(240)	(608)	(152)	(789)	(111)	(100)	(467)	(533)	(440)	(323)	(237)

	Total	Party ID			Ideology			Region				Family Income		
		Dem	Rep	Ind	Lib	Mod	Con	Northeast	Midwest	South	West	Under 40	40-100	100+
The Obama Administration	31.5%	15.1%	47.9%	37.8%	15.2%	25.2%	48.9%	21.8%	36.7%	35.9%	27.5%	28.4%	33.1%	34.1%
The Republican Party	51.3%	71.2%	24.4%	62.0%	83.5%	61.2%	30.5%	44.9%	54.4%	50.2%	55.0%	50.7%	53.4%	55.2%
The Democratic Party	31.7%	13.2%	48.5%	40.4%	12.1%	26.2%	50.2%	21.6%	37.5%	36.0%	27.6%	31.1%	31.6%	34.2%
Totals	(1,000)	(356)	(254)	(281)	(211)	(345)	(320)	(192)	(227)	(346)	(235)	(368)	(409)	(126)

The Economist/YouGov Poll

December 18-21 2010



27. These groups are concerned about issues affecting middle class people

How concerned are the following groups about issues that affect middle class people?

	Total	Age			Race			Gender		Education		
		18-29	30-64	65+	White	Black	Hispanic	Male	Female	HS or Less	Some College	College Grad
The Obama Administration	51.7%	51.6%	52.7%	48.7%	48.5%	74.0%	54.1%	53.7%	49.9%	46.6%	49.4%	63.0%
The Republican Party	42.4%	44.8%	42.5%	38.2%	43.2%	41.2%	36.3%	46.4%	38.8%	41.7%	42.6%	43.3%
The Democratic Party	51.7%	54.4%	51.2%	49.4%	48.0%	74.1%	58.4%	54.0%	49.7%	45.0%	51.7%	63.0%
Totals	(1,000)	(240)	(608)	(152)	(789)	(111)	(100)	(467)	(533)	(440)	(323)	(237)

	Total	Party ID			Ideology			Region				Family Income		
		Dem	Rep	Ind	Lib	Mod	Con	Northeast	Midwest	South	West	Under 40	40-100	100+
The Obama Administration	51.7%	74.2%	32.0%	51.0%	82.6%	62.0%	32.7%	56.6%	54.6%	45.6%	54.3%	49.8%	53.0%	59.3%
The Republican Party	42.4%	28.8%	69.4%	38.8%	22.7%	35.7%	67.6%	43.2%	46.1%	43.5%	36.7%	36.5%	45.2%	50.1%
The Democratic Party	51.7%	75.9%	33.3%	48.6%	81.6%	62.8%	33.5%	56.8%	53.1%	46.3%	54.6%	49.5%	54.0%	56.4%
Totals	(1,000)	(356)	(254)	(281)	(211)	(345)	(320)	(192)	(227)	(346)	(235)	(368)	(409)	(126)

The Economist/YouGov Poll

December 18-21 2010



28. These groups are not concerned about issues affecting middle class people

How concerned are the following groups about issues that affect middle class people?

	Total	Age			Race			Gender		Education		
		18-29	30-64	65+	White	Black	Hispanic	Male	Female	HS or Less	Some College	College Grad
The Obama Administration	36.2%	30.9%	37.2%	41.0%	39.0%	17.7%	32.4%	38.9%	33.7%	36.0%	38.4%	33.8%
The Republican Party	45.1%	37.1%	46.6%	52.9%	43.9%	48.9%	51.2%	46.7%	43.6%	39.3%	45.2%	54.6%
The Democratic Party	35.9%	27.9%	38.3%	40.4%	39.1%	17.4%	29.0%	39.0%	33.1%	36.7%	35.9%	34.5%
Totals	(1,000)	(240)	(608)	(152)	(789)	(111)	(100)	(467)	(533)	(440)	(323)	(237)

	Total	Party ID			Ideology			Region				Family Income		
		Dem	Rep	Ind	Lib	Mod	Con	Northeast	Midwest	South	West	Under 40	40-100	100+
The Obama Administration	36.2%	16.2%	60.6%	41.1%	13.4%	31.4%	58.5%	29.4%	35.0%	42.8%	32.6%	32.8%	38.5%	37.3%
The Republican Party	45.1%	60.9%	23.8%	53.2%	72.6%	57.0%	24.6%	42.3%	44.3%	43.4%	50.4%	44.7%	46.8%	46.0%
The Democratic Party	35.9%	14.8%	59.5%	42.7%	14.1%	31.2%	57.5%	28.8%	37.3%	41.4%	31.9%	32.0%	38.6%	38.8%
Totals	(1,000)	(356)	(254)	(281)	(211)	(345)	(320)	(192)	(227)	(346)	(235)	(368)	(409)	(126)

The Economist/YouGov Poll

December 18-21 2010



29. These groups are concerned about issues affecting wealthy people

How concerned are the following groups about issues that affect wealthy people?

	Total	Age			Race			Gender		Education		
		18-29	30-64	65+	White	Black	Hispanic	Male	Female	HS or Less	Some College	College Grad
The Obama Administration	48.6%	47.9%	49.3%	47.2%	49.1%	50.4%	41.4%	49.3%	47.9%	46.3%	50.7%	49.8%
The Republican Party	76.9%	72.4%	78.3%	79.2%	77.8%	79.4%	64.6%	82.1%	72.1%	67.2%	80.1%	89.3%
The Democratic Party	47.7%	45.9%	48.2%	48.7%	48.7%	46.9%	39.3%	48.5%	46.9%	47.2%	49.0%	46.9%
Totals	(1,000)	(240)	(608)	(152)	(789)	(111)	(100)	(467)	(533)	(440)	(323)	(237)

	Total	Party ID			Ideology			Region				Family Income		
		Dem	Rep	Ind	Lib	Mod	Con	Northeast	Midwest	South	West	Under 40	40-100	100+
The Obama Administration	48.6%	55.8%	42.3%	50.5%	59.3%	56.9%	40.6%	51.1%	52.5%	46.1%	46.5%	46.0%	54.1%	42.9%
The Republican Party	76.9%	84.7%	75.7%	80.9%	90.7%	84.1%	77.4%	76.7%	79.0%	74.1%	79.1%	68.2%	84.8%	80.1%
The Democratic Party	47.7%	52.6%	43.2%	50.4%	51.8%	56.7%	42.3%	50.2%	48.7%	47.4%	45.3%	46.3%	53.6%	35.2%
Totals	(1,000)	(356)	(254)	(281)	(211)	(345)	(320)	(192)	(227)	(346)	(235)	(368)	(409)	(126)

The Economist/YouGov Poll

December 18-21 2010



30. These groups are not concerned about issues affecting wealthy people

How concerned are the following groups about issues that affect wealthy people?

	Total	Age			Race			Gender		Education		
		18-29	30-64	65+	White	Black	Hispanic	Male	Female	HS or Less	Some College	College Grad
The Obama Administration	40.0%	35.5%	40.3%	46.5%	40.4%	37.3%	39.9%	43.5%	36.9%	36.8%	37.5%	48.3%
The Republican Party	12.5%	10.9%	12.3%	15.7%	12.2%	10.9%	17.6%	11.4%	13.4%	16.3%	10.1%	8.8%
The Democratic Party	41.1%	37.9%	41.6%	44.7%	40.8%	42.9%	42.0%	44.7%	37.9%	35.6%	39.7%	52.1%
Totals	(1,000)	(240)	(608)	(152)	(789)	(111)	(100)	(467)	(533)	(440)	(323)	(237)

	Total	Party ID			Ideology			Region				Family Income		
		Dem	Rep	Ind	Lib	Mod	Con	Northeast	Midwest	South	West	Under 40	40-100	100+
The Obama Administration	40.0%	34.9%	52.2%	43.7%	36.2%	37.7%	53.8%	36.7%	38.8%	42.0%	40.7%	36.9%	38.6%	52.9%
The Republican Party	12.5%	9.2%	16.9%	13.3%	5.9%	11.1%	16.5%	11.0%	14.4%	13.2%	10.7%	16.6%	7.8%	14.3%
The Democratic Party	41.1%	39.5%	50.6%	43.4%	44.0%	38.7%	51.6%	37.9%	43.3%	40.4%	42.5%	36.7%	39.3%	61.1%
Totals	(1,000)	(356)	(254)	(281)	(211)	(345)	(320)	(192)	(227)	(346)	(235)	(368)	(409)	(126)

The Economist/YouGov Poll

December 18-21 2010



31. Party leaders inspire quite a bit or a great deal of confidence

How much confidence do you have in the leaders of...

	Total	Age			Race			Gender		Education		
		18-29	30-64	65+	White	Black	Hispanic	Male	Female	HS or Less	Some College	College Grad
The Republicans in Congress	18.7%	19.0%	17.2%	23.6%	20.2%	12.2%	13.1%	20.8%	16.8%	19.8%	17.7%	18.2%
The Democrats in Congress	17.7%	20.2%	16.9%	16.6%	13.2%	51.1%	17.9%	16.1%	19.2%	17.5%	20.2%	15.2%
Totals	(1,000)	(240)	(608)	(152)	(789)	(111)	(100)	(467)	(533)	(440)	(323)	(237)

	Total	Party ID			Ideology			Region				Family Income		
		Dem	Rep	Ind	Lib	Mod	Con	Northeast	Midwest	South	West	Under 40	40-100	100+
The Republicans in Congress	18.7%	4.6%	44.5%	15.6%	2.9%	11.2%	40.9%	19.0%	13.9%	24.1%	15.2%	18.3%	18.6%	23.1%
The Democrats in Congress	17.7%	40.7%	0.7%	10.2%	39.1%	20.8%	5.6%	18.2%	16.3%	18.6%	17.5%	21.5%	16.4%	13.8%
Totals	(1,000)	(356)	(254)	(281)	(211)	(345)	(320)	(192)	(227)	(346)	(235)	(368)	(409)	(126)

The Economist/YouGov Poll

December 18-21 2010



32. Party leaders inspire very little or no confidence

How much confidence do you have in the leaders of...

	Total	Age			Race			Gender		Education		
		18-29	30-64	65+	White	Black	Hispanic	Male	Female	HS or Less	Some College	College Grad
The Republicans in Congress	51.5%	44.7%	53.1%	57.2%	49.5%	66.1%	52.1%	52.2%	50.9%	47.1%	53.7%	56.3%
The Democrats in Congress	52.7%	41.6%	55.5%	60.9%	57.5%	21.2%	47.1%	58.7%	47.3%	52.0%	53.4%	53.0%
Totals	(1,000)	(240)	(608)	(152)	(789)	(111)	(100)	(467)	(533)	(440)	(323)	(237)

	Total	Party ID			Ideology			Region				Family Income		
		Dem	Rep	Ind	Lib	Mod	Con	Northeast	Midwest	South	West	Under 40	40-100	100+
The Republicans in Congress	51.5%	75.0%	19.0%	59.7%	86.2%	62.9%	23.9%	50.8%	58.0%	47.8%	51.4%	49.3%	52.7%	51.8%
The Democrats in Congress	52.7%	19.2%	87.7%	64.2%	22.6%	43.9%	83.5%	46.1%	56.7%	53.0%	53.5%	46.1%	54.5%	61.7%
Totals	(1,000)	(356)	(254)	(281)	(211)	(345)	(320)	(192)	(227)	(346)	(235)	(368)	(409)	(126)

The Economist/YouGov Poll

December 18-21 2010



33. Favorability rating of John Boehner, Version A

Do you have a favorable or an unfavorable opinion of John Boehner? Asked of respondents shown an unemotional picture of John Boehner (see appendix)

	Total	Age			Race			Gender		Education		
		18-29	30-64	65+	White	Black	Hispanic	Male	Female	HS or Less	Some College	College Grad
Very favorable	9.7%	4.9%	8.5%	23.5%	11.2%	1.9%	4.2%	10.2%	9.3%	10.0%	10.7%	7.9%
Somewhat favorable	19.8%	18.5%	20.5%	19.5%	22.8%	7.4%	4.3%	26.7%	13.4%	16.1%	16.3%	31.2%
Somewhat unfavorable	12.7%	13.3%	12.4%	12.6%	11.4%	22.4%	15.1%	14.2%	11.3%	12.3%	13.5%	12.2%
Very unfavorable	22.0%	16.2%	26.1%	18.1%	20.1%	37.5%	25.0%	23.0%	21.2%	14.3%	24.1%	33.1%
Not sure	35.8%	47.0%	32.6%	26.3%	34.6%	30.8%	51.4%	25.9%	44.9%	47.3%	35.3%	15.6%
Totals (Unweighted)	100.0% (486)	100.0% (124)	100.0% (296)	100.0% (66)	100.0% (391)	100.0% (44)	100.0% (51)	100.0% (228)	100.0% (258)	100.0% (215)	100.0% (165)	100.0% (106)

	Total	Party ID			Ideology			Region				Family Income		
		Dem	Rep	Ind	Lib	Mod	Con	Northeast	Midwest	South	West	Under 40	40-100	100+
Very favorable	9.7%	0.5%	27.0%	6.9%	2.1%	3.4%	24.8%	9.1%	7.5%	10.5%	11.3%	7.4%	10.0%	17.6%
Somewhat favorable	19.8%	7.8%	36.0%	23.1%	6.3%	19.0%	36.1%	24.0%	20.1%	17.8%	18.8%	12.6%	22.1%	32.3%
Somewhat unfavorable	12.7%	15.0%	8.4%	16.3%	12.0%	20.9%	7.8%	12.5%	16.8%	14.1%	7.0%	14.7%	10.7%	9.0%
Very unfavorable	22.0%	43.0%	2.0%	23.6%	54.8%	26.8%	3.9%	21.2%	21.3%	17.8%	29.2%	14.9%	28.1%	29.2%
Not sure	35.8%	33.7%	26.5%	30.2%	24.9%	29.8%	27.4%	33.2%	34.3%	39.7%	33.7%	50.3%	29.1%	12.0%
Totals (Unweighted)	100.0% (486)	100.0% (173)	100.0% (128)	100.0% (136)	100.0% (100)	100.0% (175)	100.0% (151)	100.0% (103)	100.0% (111)	100.0% (152)	100.0% (120)	100.0% (169)	100.0% (203)	100.0% (65)

The Economist/YouGov Poll

December 18-21 2010



34. Favorability rating of John Boehner, Version B

Do you have a favorable or an unfavorable opinion of John Boehner? Asked of respondents shown an emotional picture of John Boehner (see appendix)

	Total	Age			Race			Gender		Education		
		18-29	30-64	65+	White	Black	Hispanic	Male	Female	HS or Less	Some College	College Grad
Very favorable	9.0%	2.1%	10.4%	14.2%	10.0%	3.3%	8.5%	11.3%	7.0%	8.8%	11.6%	6.7%
Somewhat favorable	16.4%	11.2%	15.6%	26.2%	18.9%	2.8%	12.9%	21.5%	11.9%	15.4%	12.7%	21.7%
Somewhat unfavorable	14.7%	21.7%	14.3%	6.1%	14.6%	13.2%	18.2%	16.6%	13.0%	13.8%	15.9%	15.0%
Very unfavorable	21.5%	20.5%	20.9%	24.7%	21.7%	23.9%	16.0%	26.0%	17.5%	12.4%	21.0%	36.2%
Not sure	38.4%	44.6%	38.8%	28.8%	34.9%	56.7%	44.5%	24.6%	50.5%	49.7%	38.9%	20.4%
Totals (Unweighted)	100.0% (511)	100.0% (114)	100.0% (312)	100.0% (85)	100.0% (395)	100.0% (67)	100.0% (49)	100.0% (236)	100.0% (275)	100.0% (223)	100.0% (157)	100.0% (131)

	Total	Party ID			Ideology			Region				Family Income		
		Dem	Rep	Ind	Lib	Mod	Con	Northeast	Midwest	South	West	Under 40	40-100	100+
Very favorable	9.0%	2.5%	20.0%	7.8%	1.6%	4.1%	21.6%	7.1%	4.8%	11.1%	11.1%	6.2%	9.6%	13.6%
Somewhat favorable	16.4%	3.1%	34.2%	20.7%	0.7%	11.6%	34.8%	11.6%	21.4%	18.0%	12.5%	11.8%	20.5%	18.9%
Somewhat unfavorable	14.7%	21.7%	7.3%	17.3%	22.0%	20.4%	9.4%	22.5%	14.2%	12.5%	12.9%	12.1%	15.9%	15.3%
Very unfavorable	21.5%	33.5%	3.8%	29.4%	50.2%	26.3%	6.6%	20.7%	20.3%	22.2%	22.1%	16.0%	24.1%	32.0%
Not sure	38.4%	39.2%	34.8%	24.8%	25.6%	37.5%	27.6%	38.1%	39.4%	36.1%	41.4%	53.9%	29.9%	20.1%
Totals (Unweighted)	100.0% (511)	100.0% (183)	100.0% (126)	100.0% (142)	100.0% (110)	100.0% (170)	100.0% (168)	100.0% (88)	100.0% (116)	100.0% (193)	100.0% (114)	100.0% (198)	100.0% (205)	100.0% (60)

The Economist/YouGov Poll

December 18-21 2010



35. Favorability rating of George W. Bush, Version A

Do you have a favorable or an unfavorable opinion of George W. Bush? Asked of respondents shown an unemotional picture of George W. Bush (see appendix)

	Total	Age			Race			Gender		Education		
		18-29	30-64	65+	White	Black	Hispanic	Male	Female	HS or Less	Some College	College Grad
Very favorable	18.0%	20.2%	15.8%	21.9%	19.6%	1.1%	24.5%	20.8%	15.5%	16.2%	17.3%	21.9%
Somewhat favorable	20.9%	14.7%	23.9%	21.5%	22.2%	13.9%	17.4%	22.0%	19.9%	22.8%	23.8%	14.2%
Somewhat unfavorable	17.1%	18.1%	15.9%	19.5%	16.3%	17.9%	25.4%	15.5%	18.6%	17.1%	16.4%	18.0%
Very unfavorable	36.9%	37.7%	37.2%	34.4%	35.2%	53.7%	30.9%	37.0%	36.7%	33.9%	36.6%	42.4%
Not sure	7.1%	9.2%	7.3%	2.6%	6.7%	13.4%	1.8%	4.6%	9.3%	9.9%	5.9%	3.6%
Totals (Unweighted)	100.0% (512)	100.0% (128)	100.0% (309)	100.0% (75)	100.0% (408)	100.0% (56)	100.0% (48)	100.0% (235)	100.0% (277)	100.0% (225)	100.0% (166)	100.0% (121)

	Total	Party ID			Ideology			Region				Family Income		
		Dem	Rep	Ind	Lib	Mod	Con	Northeast	Midwest	South	West	Under 40	40-100	100+
Very favorable	18.0%	3.9%	44.8%	16.0%	2.0%	11.2%	43.2%	13.0%	21.9%	18.8%	17.4%	14.6%	18.8%	24.3%
Somewhat favorable	20.9%	9.7%	34.6%	23.9%	3.1%	21.5%	31.9%	16.3%	20.6%	24.6%	19.8%	22.8%	22.1%	13.4%
Somewhat unfavorable	17.1%	22.5%	8.6%	16.5%	17.9%	18.7%	10.6%	15.1%	18.4%	16.0%	19.0%	18.3%	17.8%	18.3%
Very unfavorable	36.9%	58.8%	8.0%	40.9%	75.0%	45.4%	10.2%	43.5%	33.1%	33.5%	39.7%	35.2%	34.8%	41.6%
Not sure	7.1%	5.1%	4.0%	2.7%	2.0%	3.2%	4.0%	12.0%	6.1%	7.1%	4.1%	9.0%	6.5%	2.3%
Totals (Unweighted)	100.0% (512)	100.0% (190)	100.0% (130)	100.0% (136)	100.0% (109)	100.0% (173)	100.0% (160)	100.0% (102)	100.0% (109)	100.0% (177)	100.0% (124)	100.0% (189)	100.0% (212)	100.0% (62)

The Economist/YouGov Poll

December 18-21 2010



36. Favorability rating of George W. Bush, Version B

Do you have a favorable or an unfavorable opinion of George W. Bush? Asked of respondents shown an emotional picture of George W. Bush (see appendix)

	Total	Age			Race			Gender		Education		
		18-29	30-64	65+	White	Black	Hispanic	Male	Female	HS or Less	Some College	College Grad
Very favorable	17.7%	9.7%	18.6%	26.5%	20.3%	1.6%	14.6%	17.9%	17.4%	20.1%	17.7%	13.8%
Somewhat favorable	23.5%	27.9%	22.6%	19.7%	25.1%	18.3%	16.3%	25.9%	21.4%	21.8%	22.7%	27.2%
Somewhat unfavorable	16.3%	20.5%	15.2%	13.8%	16.8%	13.6%	15.6%	15.4%	17.2%	15.9%	15.2%	18.4%
Very unfavorable	38.2%	40.5%	36.9%	39.1%	35.2%	60.3%	37.9%	37.7%	38.6%	34.5%	42.1%	39.5%
Not sure	4.3%	1.3%	6.6%	0.9%	2.6%	6.1%	15.6%	3.1%	5.4%	7.7%	2.3%	1.1%
Totals (Unweighted)	100.0% (488)	100.0% (112)	100.0% (299)	100.0% (77)	100.0% (381)	100.0% (55)	100.0% (52)	100.0% (232)	100.0% (256)	100.0% (215)	100.0% (157)	100.0% (116)

	Total	Party ID			Ideology			Region				Family Income		
		Dem	Rep	Ind	Lib	Mod	Con	Northeast	Midwest	South	West	Under 40	40-100	100+
Very favorable	17.7%	3.8%	41.0%	14.8%	2.4%	9.9%	39.3%	14.9%	13.3%	22.0%	17.3%	14.6%	19.3%	23.4%
Somewhat favorable	23.5%	9.9%	40.9%	23.5%	7.0%	18.9%	35.9%	23.7%	23.8%	23.9%	22.3%	19.5%	23.5%	30.3%
Somewhat unfavorable	16.3%	19.2%	12.2%	20.2%	14.4%	23.3%	11.7%	16.8%	20.9%	13.8%	15.5%	18.2%	16.6%	16.0%
Very unfavorable	38.2%	65.6%	3.8%	38.2%	75.1%	45.0%	12.2%	39.9%	40.4%	37.2%	36.3%	41.3%	37.6%	29.3%
Not sure	4.3%	1.6%	2.1%	3.4%	1.0%	2.9%	0.9%	4.7%	1.5%	3.1%	8.6%	6.4%	2.9%	1.1%
Totals (Unweighted)	100.0% (488)	100.0% (166)	100.0% (124)	100.0% (145)	100.0% (102)	100.0% (172)	100.0% (160)	100.0% (90)	100.0% (118)	100.0% (169)	100.0% (111)	100.0% (179)	100.0% (197)	100.0% (64)

The Economist/YouGov Poll

December 18-21 2010



37. Favorability rating of Bill Clinton, Version A

Do you have a favorable or an unfavorable opinion of Bill Clinton? Asked of respondents shown an unemotional picture of Bill Clinton (see appendix)

	Total	Age			Race			Gender		Education		
		18-29	30-64	65+	White	Black	Hispanic	Male	Female	HS or Less	Some College	College Grad
Very favorable	32.7%	29.0%	35.0%	30.5%	28.3%	64.0%	35.9%	32.9%	32.6%	30.5%	36.3%	32.1%
Somewhat favorable	26.7%	27.6%	27.0%	24.5%	26.3%	23.4%	34.5%	26.4%	26.9%	26.0%	24.7%	30.2%
Somewhat unfavorable	18.4%	17.0%	19.5%	16.9%	20.8%	2.8%	15.5%	19.9%	17.2%	17.7%	19.3%	18.6%
Very unfavorable	17.2%	18.2%	14.3%	25.4%	19.8%	5.5%	6.6%	18.7%	15.9%	18.3%	15.9%	16.8%
Not sure	5.0%	8.3%	4.3%	2.6%	4.8%	4.3%	7.5%	2.2%	7.3%	7.4%	3.8%	2.3%
Totals (Unweighted)	100.0% (497)	100.0% (110)	100.0% (312)	100.0% (75)	100.0% (395)	100.0% (54)	100.0% (48)	100.0% (228)	100.0% (269)	100.0% (220)	100.0% (163)	100.0% (114)

	Total	Party ID			Ideology			Region				Family Income		
		Dem	Rep	Ind	Lib	Mod	Con	Northeast	Midwest	South	West	Under 40	40-100	100+
Very favorable	32.7%	56.9%	4.6%	33.1%	60.6%	46.4%	11.2%	32.6%	28.1%	34.6%	35.0%	36.1%	29.5%	34.1%
Somewhat favorable	26.7%	28.0%	21.0%	29.8%	29.7%	28.3%	21.2%	36.6%	29.7%	21.4%	22.9%	26.1%	27.7%	27.7%
Somewhat unfavorable	18.4%	9.5%	36.8%	11.9%	7.2%	14.5%	28.2%	14.9%	15.4%	21.9%	19.4%	17.9%	19.7%	17.9%
Very unfavorable	17.2%	2.7%	33.9%	21.9%	1.5%	8.6%	36.2%	12.5%	22.3%	15.9%	17.7%	14.1%	19.3%	17.9%
Not sure	5.0%	3.0%	3.7%	3.3%	1.1%	2.1%	3.2%	3.4%	4.5%	6.2%	4.9%	5.8%	3.9%	2.4%
Totals (Unweighted)	100.0% (497)	100.0% (184)	100.0% (130)	100.0% (136)	100.0% (92)	100.0% (178)	100.0% (162)	100.0% (100)	100.0% (120)	100.0% (169)	100.0% (108)	100.0% (181)	100.0% (213)	100.0% (58)

The Economist/YouGov Poll

December 18-21 2010



38. Favorability rating of Bill Clinton, Version B

Do you have a favorable or an unfavorable opinion of Bill Clinton? Asked of respondents shown an emotional picture of Bill Clinton (see appendix)

	Total	Age			Race			Gender		Education		
		18-29	30-64	65+	White	Black	Hispanic	Male	Female	HS or Less	Some College	College Grad
Very favorable	28.8%	26.2%	31.1%	25.4%	25.9%	39.0%	41.7%	26.3%	31.1%	25.5%	31.1%	31.6%
Somewhat favorable	32.1%	32.5%	31.3%	34.0%	32.9%	36.9%	19.0%	32.9%	31.4%	27.9%	35.8%	35.0%
Somewhat unfavorable	15.2%	16.1%	14.5%	16.1%	17.8%	3.1%	7.6%	15.8%	14.7%	15.2%	15.1%	15.5%
Very unfavorable	18.2%	18.1%	16.7%	23.6%	18.5%	14.9%	19.4%	21.9%	14.6%	22.1%	14.8%	15.5%
Not sure	5.7%	7.1%	6.3%	0.9%	4.9%	6.2%	12.3%	3.0%	8.2%	9.4%	3.2%	2.4%
Totals (Unweighted)	100.0% (501)	100.0% (129)	100.0% (295)	100.0% (77)	100.0% (392)	100.0% (57)	100.0% (52)	100.0% (237)	100.0% (264)	100.0% (218)	100.0% (160)	100.0% (123)

	Total	Party ID			Ideology			Region				Family Income		
		Dem	Rep	Ind	Lib	Mod	Con	Northeast	Midwest	South	West	Under 40	40-100	100+
Very favorable	28.8%	52.8%	12.2%	22.1%	52.0%	37.2%	9.7%	26.7%	29.3%	32.1%	25.0%	29.9%	30.8%	21.9%
Somewhat favorable	32.1%	37.6%	17.2%	42.8%	41.9%	38.6%	20.6%	30.0%	33.7%	27.7%	38.5%	32.2%	34.6%	30.4%
Somewhat unfavorable	15.2%	6.3%	27.5%	15.5%	3.2%	12.3%	28.6%	21.6%	16.0%	13.8%	12.4%	16.5%	13.2%	15.2%
Very unfavorable	18.2%	1.3%	41.8%	16.0%	1.7%	10.8%	39.8%	10.2%	16.6%	22.6%	18.4%	12.3%	17.1%	32.5%
Not sure	5.7%	1.9%	1.3%	3.6%	1.3%	1.1%	1.4%	11.6%	4.3%	3.8%	5.8%	9.1%	4.2%	0.0%
Totals (Unweighted)	100.0% (501)	100.0% (172)	100.0% (124)	100.0% (144)	100.0% (119)	100.0% (167)	100.0% (157)	100.0% (91)	100.0% (107)	100.0% (176)	100.0% (127)	100.0% (185)	100.0% (196)	100.0% (68)

The Economist/YouGov Poll

December 18-21 2010



39. Favorability rating of Hillary Clinton, Version A

Do you have a favorable or an unfavorable opinion of Hillary Clinton? Asked of respondents shown an unemotional picture of Hillary Clinton (see appendix)

	Total	Age			Race			Gender		Education		
		18-29	30-64	65+	White	Black	Hispanic	Male	Female	HS or Less	Some College	College Grad
Very favorable	26.1%	21.5%	27.4%	28.1%	21.1%	53.8%	38.1%	18.2%	32.8%	26.8%	27.8%	22.5%
Somewhat favorable	29.5%	26.0%	31.3%	28.1%	28.4%	30.5%	39.6%	27.8%	31.0%	29.7%	24.8%	35.1%
Somewhat unfavorable	17.7%	21.6%	18.3%	10.0%	20.5%	3.6%	8.7%	19.7%	16.0%	12.3%	21.8%	21.8%
Very unfavorable	21.2%	23.5%	16.9%	32.6%	24.6%	6.0%	8.3%	29.1%	14.4%	22.2%	22.2%	18.3%
Not sure	5.5%	7.5%	6.0%	1.1%	5.5%	6.1%	5.3%	5.3%	5.7%	9.0%	3.3%	2.3%
Totals (Unweighted)	100.0% (469)	100.0% (107)	100.0% (288)	100.0% (74)	100.0% (367)	100.0% (56)	100.0% (46)	100.0% (210)	100.0% (259)	100.0% (206)	100.0% (157)	100.0% (106)

	Total	Party ID			Ideology			Region				Family Income		
		Dem	Rep	Ind	Lib	Mod	Con	Northeast	Midwest	South	West	Under 40	40-100	100+
Very favorable	26.1%	48.2%	5.4%	18.0%	49.4%	31.4%	6.7%	26.5%	30.6%	24.9%	23.3%	33.0%	22.6%	24.6%
Somewhat favorable	29.5%	36.1%	18.2%	33.5%	33.0%	33.9%	21.6%	24.6%	28.3%	25.5%	39.9%	31.8%	31.0%	22.7%
Somewhat unfavorable	17.7%	9.2%	33.5%	17.9%	12.4%	15.2%	27.6%	22.1%	14.9%	18.1%	16.7%	11.8%	23.6%	12.5%
Very unfavorable	21.2%	3.6%	40.8%	28.6%	4.2%	18.2%	40.9%	15.6%	21.7%	25.7%	17.8%	15.8%	18.8%	38.1%
Not sure	5.5%	2.9%	2.1%	2.0%	1.0%	1.2%	3.4%	11.2%	4.5%	5.8%	2.2%	7.6%	3.9%	2.0%
Totals (Unweighted)	100.0% (469)	100.0% (168)	100.0% (114)	100.0% (135)	100.0% (101)	100.0% (169)	100.0% (142)	100.0% (83)	100.0% (102)	100.0% (170)	100.0% (114)	100.0% (178)	100.0% (193)	100.0% (55)

The Economist/YouGov Poll

December 18-21 2010



40. Favorability rating of Hillary Clinton, Version B

Do you have a favorable or an unfavorable opinion of Hillary Clinton? Asked of respondents shown an emotional picture of Hillary Clinton (see appendix)

	Total	Age			Race			Gender		Education		
		18-29	30-64	65+	White	Black	Hispanic	Male	Female	HS or Less	Some College	College Grad
Very favorable	21.7%	15.5%	23.7%	25.7%	20.9%	27.6%	21.3%	18.7%	24.5%	17.1%	23.8%	26.6%
Somewhat favorable	33.4%	33.6%	33.1%	34.4%	31.4%	43.2%	40.6%	36.4%	30.7%	32.0%	36.2%	32.8%
Somewhat unfavorable	16.5%	17.7%	16.1%	15.6%	18.6%	7.2%	8.1%	16.0%	17.0%	16.7%	14.5%	18.3%
Very unfavorable	20.1%	18.9%	20.3%	21.8%	21.6%	15.0%	12.8%	24.1%	16.4%	20.1%	21.5%	18.7%
Not sure	8.3%	14.2%	6.8%	2.5%	7.4%	7.0%	17.3%	4.9%	11.4%	14.1%	4.1%	3.6%
Totals (Unweighted)	100.0% (528)	100.0% (133)	100.0% (318)	100.0% (77)	100.0% (420)	100.0% (54)	100.0% (54)	100.0% (255)	100.0% (273)	100.0% (231)	100.0% (166)	100.0% (131)

	Total	Party ID			Ideology			Region				Family Income		
		Dem	Rep	Ind	Lib	Mod	Con	Northeast	Midwest	South	West	Under 40	40-100	100+
Very favorable	21.7%	44.4%	5.0%	16.4%	48.6%	28.7%	7.4%	17.7%	21.0%	24.3%	21.9%	21.8%	21.4%	22.4%
Somewhat favorable	33.4%	43.7%	15.4%	44.9%	35.4%	49.9%	21.7%	40.1%	33.5%	29.9%	32.9%	31.9%	36.9%	32.4%
Somewhat unfavorable	16.5%	2.9%	31.7%	17.6%	8.5%	11.5%	25.7%	17.4%	19.8%	15.9%	13.6%	16.9%	17.2%	17.5%
Very unfavorable	20.1%	6.5%	43.2%	15.6%	5.3%	7.4%	43.4%	13.1%	23.4%	20.6%	22.2%	18.5%	18.9%	26.1%
Not sure	8.3%	2.6%	4.7%	5.6%	2.2%	2.6%	1.9%	11.7%	2.4%	9.4%	9.4%	10.9%	5.6%	1.6%
Totals (Unweighted)	100.0% (528)	100.0% (186)	100.0% (140)	100.0% (146)	100.0% (109)	100.0% (175)	100.0% (178)	100.0% (108)	100.0% (124)	100.0% (175)	100.0% (121)	100.0% (189)	100.0% (215)	100.0% (71)

The Economist/YouGov Poll

December 18-21 2010



41. Important characteristic when evaluating elected officials

When considering how you evaluate elected officials, how important is it that the person is...

	Total	Age			Race			Gender		Education		
		18-29	30-64	65+	White	Black	Hispanic	Male	Female	HS or Less	Some College	College Grad
Strong	88.4%	84.7%	88.8%	93.0%	89.4%	88.1%	79.2%	88.6%	88.2%	82.9%	91.9%	93.6%
Manly (if male)	38.3%	33.9%	38.5%	44.9%	37.2%	51.6%	32.0%	42.3%	34.7%	43.1%	37.4%	31.3%
Feminine (if female)	31.7%	25.9%	31.5%	41.6%	31.1%	42.6%	22.7%	31.9%	31.4%	36.5%	31.1%	24.2%
In touch with their feelings	63.7%	59.1%	62.2%	76.3%	62.5%	75.3%	60.6%	58.7%	68.2%	65.2%	65.4%	59.2%
Dedicated	92.6%	87.7%	92.8%	99.4%	94.3%	89.8%	79.3%	93.6%	91.6%	87.9%	95.9%	96.4%
Emotionally stable	90.6%	84.6%	91.7%	96.4%	92.0%	91.1%	76.6%	91.3%	89.9%	85.3%	92.5%	97.3%
Totals	(1,000)	(240)	(608)	(152)	(789)	(111)	(100)	(467)	(533)	(440)	(323)	(237)

	Total	Party ID			Ideology			Region				Family Income		
		Dem	Rep	Ind	Lib	Mod	Con	Northeast	Midwest	South	West	Under 40	40-100	100+
Strong	88.4%	89.7%	94.9%	88.1%	91.6%	90.6%	94.2%	87.9%	88.1%	88.8%	88.6%	85.0%	91.2%	91.8%
Manly (if male)	38.3%	35.5%	50.2%	33.1%	24.3%	33.2%	52.8%	41.3%	33.2%	41.1%	36.7%	40.9%	38.2%	33.9%
Feminine (if female)	31.7%	28.4%	42.7%	25.7%	17.1%	26.5%	44.1%	31.2%	26.1%	36.8%	29.8%	35.2%	29.7%	26.3%
In touch with their feelings	63.7%	71.0%	58.8%	63.5%	63.5%	69.5%	61.7%	65.1%	59.8%	63.4%	66.8%	69.0%	60.4%	56.9%
Dedicated	92.6%	92.4%	97.0%	94.3%	95.8%	94.3%	97.3%	93.2%	94.4%	90.6%	93.2%	89.0%	95.2%	98.7%
Emotionally stable	90.6%	91.9%	92.1%	93.9%	94.6%	95.4%	93.0%	91.9%	91.6%	89.1%	90.9%	86.8%	93.9%	95.4%
Totals	(1,000)	(356)	(254)	(281)	(211)	(345)	(320)	(192)	(227)	(346)	(235)	(368)	(409)	(126)

The Economist/YouGov Poll

December 18-21 2010



42. Unimportant characteristic when evaluating elected officials

When considering how you evaluate elected officials, how important is it that the person is...

	Total	Age			Race			Gender		Education		
		18-29	30-64	65+	White	Black	Hispanic	Male	Female	HS or Less	Some College	College Grad
Strong	5.5%	6.1%	5.0%	6.5%	5.9%	1.6%	7.1%	7.5%	3.8%	5.7%	4.9%	6.0%
Manly (if male)	53.7%	56.5%	53.3%	50.7%	56.2%	36.8%	51.9%	51.9%	55.3%	43.6%	58.1%	65.4%
Feminine (if female)	60.7%	64.1%	60.6%	55.5%	62.5%	45.9%	61.9%	62.8%	58.8%	50.7%	63.9%	73.6%
In touch with their feelings	28.8%	33.1%	29.6%	18.7%	31.2%	13.8%	24.9%	35.4%	22.8%	21.8%	29.9%	39.1%
Dedicated	2.2%	3.7%	2.0%	0.6%	1.7%	2.1%	7.0%	2.6%	1.9%	2.2%	2.2%	2.2%
Emotionally stable	3.6%	6.7%	2.6%	1.8%	3.3%	0.8%	9.7%	5.1%	2.2%	3.6%	5.1%	1.8%
Totals	(1,000)	(240)	(608)	(152)	(789)	(111)	(100)	(467)	(533)	(440)	(323)	(237)

	Total	Party ID			Ideology			Region				Family Income		
		Dem	Rep	Ind	Lib	Mod	Con	Northeast	Midwest	South	West	Under 40	40-100	100+
Strong	5.5%	5.4%	3.4%	8.4%	6.1%	7.3%	4.5%	6.5%	6.2%	3.7%	6.9%	5.6%	5.1%	7.6%
Manly (if male)	53.7%	57.3%	45.5%	61.4%	70.9%	61.9%	44.3%	51.5%	57.8%	50.3%	56.6%	49.1%	55.5%	61.6%
Feminine (if female)	60.7%	64.3%	54.0%	69.3%	76.9%	68.8%	53.8%	62.4%	63.9%	55.8%	63.4%	54.2%	64.3%	72.2%
In touch with their feelings	28.8%	21.8%	36.5%	32.2%	31.9%	26.3%	35.1%	29.7%	32.4%	29.0%	24.2%	20.7%	34.6%	40.0%
Dedicated	2.2%	2.5%	1.9%	1.8%	2.3%	2.9%	2.0%	2.1%	0.2%	3.3%	2.6%	3.0%	2.0%	0.6%
Emotionally stable	3.6%	2.9%	5.3%	2.6%	3.2%	2.6%	4.7%	4.3%	1.9%	4.3%	3.6%	3.9%	3.2%	3.0%
Totals	(1,000)	(356)	(254)	(281)	(211)	(345)	(320)	(192)	(227)	(346)	(235)	(368)	(409)	(126)

43. Reflects negatively on a politician to cry in public

Do you think it reflects negatively on an elected official if they cry in public?

	Total	Age			Race			Gender		Education		
		18-29	30-64	65+	White	Black	Hispanic	Male	Female	HS or Less	Some College	College Grad
Yes	17.9%	19.1%	18.5%	13.9%	17.2%	21.9%	20.0%	22.9%	13.4%	17.6%	21.5%	14.2%
No	64.7%	64.9%	61.7%	74.5%	66.4%	58.8%	55.7%	60.4%	68.5%	62.9%	64.2%	68.2%
Not sure	17.4%	16.0%	19.8%	11.7%	16.5%	19.3%	24.2%	16.6%	18.2%	19.5%	14.3%	17.6%
Totals (Unweighted)	100.0% (999)	100.0% (240)	100.0% (607)	100.0% (152)	100.0% (789)	100.0% (110)	100.0% (100)	100.0% (466)	100.0% (533)	100.0% (439)	100.0% (323)	100.0% (237)

	Total	Party ID			Ideology			Region				Family Income		
		Dem	Rep	Ind	Lib	Mod	Con	Northeast	Midwest	South	West	Under 40	40-100	100+
Yes	17.9%	24.6%	14.2%	16.0%	24.2%	21.5%	14.1%	19.8%	16.7%	18.9%	16.2%	15.1%	20.1%	20.5%
No	64.7%	58.5%	73.0%	65.7%	59.1%	65.0%	72.9%	61.5%	65.1%	66.0%	64.6%	68.4%	62.4%	64.6%
Not sure	17.4%	16.9%	12.8%	18.3%	16.7%	13.5%	13.0%	18.7%	18.2%	15.1%	19.2%	16.5%	17.5%	14.9%
Totals (Unweighted)	100.0% (999)	100.0% (355)	100.0% (254)	100.0% (281)	100.0% (210)	100.0% (345)	100.0% (320)	100.0% (192)	100.0% (226)	100.0% (346)	100.0% (235)	100.0% (368)	100.0% (408)	100.0% (126)

44. Reflects negatively on a female elected official to cry in public

Do you think female elected officials are treated more harshly than males if they cry in public?

	Total	Age			Race			Gender		Education		
		18-29	30-64	65+	White	Black	Hispanic	Male	Female	HS or Less	Some College	College Grad
Yes	49.1%	44.8%	51.1%	49.3%	49.0%	42.4%	59.2%	39.0%	58.3%	46.2%	49.7%	53.4%
No	34.5%	34.1%	34.4%	35.5%	35.4%	37.0%	22.2%	45.9%	24.3%	33.6%	37.1%	33.0%
Not sure	16.4%	21.0%	14.5%	15.2%	15.6%	20.6%	18.6%	15.1%	17.5%	20.2%	13.3%	13.7%
Totals (Unweighted)	100.0% (997)	100.0% (240)	100.0% (605)	100.0% (152)	100.0% (788)	100.0% (110)	100.0% (99)	100.0% (464)	100.0% (533)	100.0% (437)	100.0% (323)	100.0% (237)

	Total	Party ID			Ideology			Region				Family Income		
		Dem	Rep	Ind	Lib	Mod	Con	Northeast	Midwest	South	West	Under 40	40-100	100+
Yes	49.1%	57.7%	45.5%	48.4%	62.9%	53.5%	42.9%	44.2%	51.9%	50.2%	48.7%	47.6%	48.5%	51.6%
No	34.5%	28.9%	42.3%	34.7%	25.9%	33.6%	46.0%	35.1%	34.6%	34.9%	33.5%	33.8%	37.4%	37.9%
Not sure	16.4%	13.4%	12.2%	16.9%	11.2%	12.9%	11.1%	20.8%	13.5%	14.9%	17.8%	18.6%	14.1%	10.5%
Totals (Unweighted)	100.0% (997)	100.0% (354)	100.0% (254)	100.0% (280)	100.0% (210)	100.0% (344)	100.0% (319)	100.0% (192)	100.0% (226)	100.0% (345)	100.0% (234)	100.0% (368)	100.0% (408)	100.0% (126)

The Economist/YouGov Poll

December 18-21 2010



45. Importance of compromise-oriented congressperson

If you had to choose, would you rather have a congressperson who...

	Total	Age			Race			Gender		Education		
		18-29	30-64	65+	White	Black	Hispanic	Male	Female	HS or Less	Some College	College Grad
Compromises to get things done.	50.9%	48.2%	52.0%	51.8%	48.6%	62.0%	59.4%	52.5%	49.6%	48.5%	48.4%	58.0%
Sticks to his or her principles, no matter what.	49.1%	51.8%	48.0%	48.2%	51.4%	38.0%	40.6%	47.5%	50.4%	51.5%	51.6%	42.0%
Totals (Unweighted)	100.0% (993)	100.0% (239)	100.0% (603)	100.0% (151)	100.0% (783)	100.0% (110)	100.0% (100)	100.0% (464)	100.0% (529)	100.0% (434)	100.0% (322)	100.0% (237)

	Total	Party ID			Ideology			Region				Family Income		
		Dem	Rep	Ind	Lib	Mod	Con	Northeast	Midwest	South	West	Under 40	40-100	100+
Compromises to get things done.	50.9%	65.0%	34.4%	53.0%	65.9%	62.9%	32.8%	53.0%	48.9%	48.9%	54.3%	47.3%	52.8%	55.7%
Sticks to his or her principles, no matter what.	49.1%	35.0%	65.6%	47.0%	34.1%	37.1%	67.2%	47.0%	51.1%	51.1%	45.7%	52.7%	47.2%	44.3%
Totals (Unweighted)	100.0% (993)	100.0% (354)	100.0% (253)	100.0% (280)	100.0% (209)	100.0% (343)	100.0% (320)	100.0% (192)	100.0% (225)	100.0% (342)	100.0% (234)	100.0% (364)	100.0% (407)	100.0% (126)

The Economist/YouGov Poll

December 18-21 2010



46. Importance of congressperson listening to constituents

If you had to choose, would you rather have a congressperson who...

	Total	Age			Race			Gender		Education		
		18-29	30-64	65+	White	Black	Hispanic	Male	Female	HS or Less	Some College	College Grad
Supports policies in line with his or her principles, regardless of how constituents feel about those policies.	37.7%	44.9%	35.7%	33.0%	38.3%	39.5%	29.7%	37.7%	37.7%	41.3%	40.4%	28.6%
Supports policies that constituents want, regardless of his or her own beliefs.	62.3%	55.1%	64.3%	67.0%	61.7%	60.5%	70.3%	62.3%	62.3%	58.7%	59.6%	71.4%
Totals (Unweighted)	100.0% (990)	100.0% (239)	100.0% (599)	100.0% (152)	100.0% (783)	100.0% (109)	100.0% (98)	100.0% (462)	100.0% (528)	100.0% (434)	100.0% (320)	100.0% (236)

	Total	Party ID			Ideology			Region				Family Income		
		Dem	Rep	Ind	Lib	Mod	Con	Northeast	Midwest	South	West	Under 40	40-100	100+
Supports policies in line with his or her principles, regardless of how constituents feel about those policies.	37.7%	38.6%	36.4%	36.4%	36.7%	37.3%	35.4%	42.0%	41.0%	31.2%	40.9%	41.7%	37.4%	30.0%
Supports policies that constituents want, regardless of his or her own beliefs.	62.3%	61.4%	63.6%	63.6%	63.3%	62.7%	64.6%	58.0%	59.0%	68.8%	59.1%	58.3%	62.6%	70.0%
Totals (Unweighted)	100.0% (990)	100.0% (352)	100.0% (254)	100.0% (278)	100.0% (209)	100.0% (340)	100.0% (320)	100.0% (190)	100.0% (224)	100.0% (343)	100.0% (233)	100.0% (363)	100.0% (405)	100.0% (126)

The Economist/YouGov Poll

December 18-21 2010



47. Obama's ideological leanings

Would you say Barack Obama is...

	Total	Age			Race			Gender		Education		
		18-29	30-64	65+	White	Black	Hispanic	Male	Female	HS or Less	Some College	College Grad
Very liberal	34.4%	27.5%	36.3%	38.8%	37.9%	14.4%	26.0%	38.0%	31.2%	32.1%	34.1%	38.4%
Liberal	18.8%	25.5%	16.1%	17.5%	18.8%	21.8%	15.9%	23.1%	15.1%	16.1%	22.4%	19.3%
Moderate	24.8%	23.1%	25.6%	25.0%	22.4%	35.6%	34.3%	24.0%	25.6%	17.2%	26.2%	36.0%
Conservative	3.9%	3.4%	4.9%	1.3%	3.6%	3.3%	7.1%	3.5%	4.3%	5.1%	4.7%	1.0%
Very conservative	1.3%	1.5%	1.5%	0.6%	0.5%	7.2%	1.9%	1.0%	1.6%	2.1%	0.6%	0.9%
Not sure	16.7%	19.0%	15.6%	16.8%	16.8%	17.7%	14.8%	10.5%	22.3%	27.4%	12.0%	4.3%
Totals (Unweighted)	100.0% (997)	100.0% (239)	100.0% (606)	100.0% (152)	100.0% (787)	100.0% (110)	100.0% (100)	100.0% (464)	100.0% (533)	100.0% (438)	100.0% (323)	100.0% (236)

	Total	Party ID			Ideology			Region				Family Income		
		Dem	Rep	Ind	Lib	Mod	Con	Northeast	Midwest	South	West	Under 40	40-100	100+
Very liberal	34.4%	8.8%	71.8%	38.9%	4.3%	21.7%	77.7%	33.2%	33.9%	36.5%	32.5%	24.6%	39.2%	47.9%
Liberal	18.8%	30.3%	12.9%	16.7%	39.7%	24.8%	8.8%	20.1%	15.5%	18.8%	21.1%	16.3%	21.6%	16.2%
Moderate	24.8%	39.6%	5.7%	31.7%	43.2%	40.5%	5.5%	26.4%	28.0%	21.8%	25.1%	23.2%	26.6%	30.1%
Conservative	3.9%	6.9%	0.8%	2.7%	4.3%	3.5%	3.4%	1.7%	4.1%	4.1%	5.1%	5.5%	3.2%	2.5%
Very conservative	1.3%	2.0%	1.2%	0.0%	3.6%	0.5%	0.7%	0.4%	0.8%	1.7%	2.0%	2.1%	1.4%	0.0%
Not sure	16.7%	12.3%	7.6%	10.0%	4.9%	9.0%	3.9%	18.3%	17.7%	17.0%	14.1%	28.4%	8.0%	3.3%
Totals (Unweighted)	100.0% (997)	100.0% (355)	100.0% (254)	100.0% (279)	100.0% (210)	100.0% (344)	100.0% (320)	100.0% (192)	100.0% (226)	100.0% (345)	100.0% (234)	100.0% (367)	100.0% (407)	100.0% (126)

The Economist/YouGov Poll

December 18-21 2010



48. Obama's sincerity

Do you think Barack Obama...

	Total	Age			Race			Gender		Education		
		18-29	30-64	65+	White	Black	Hispanic	Male	Female	HS or Less	Some College	College Grad
Says what he believes	44.2%	46.2%	44.0%	41.5%	39.6%	75.6%	47.6%	42.3%	45.8%	41.9%	44.5%	47.5%
Says what he thinks people want to hear	55.8%	53.8%	56.0%	58.5%	60.4%	24.4%	52.4%	57.7%	54.2%	58.1%	55.5%	52.5%
Totals (Unweighted)	100.0% (992)	100.0% (238)	100.0% (603)	100.0% (151)	100.0% (783)	100.0% (109)	100.0% (100)	100.0% (461)	100.0% (531)	100.0% (435)	100.0% (321)	100.0% (236)

	Total	Party ID			Ideology			Region				Family Income		
		Dem	Rep	Ind	Lib	Mod	Con	Northeast	Midwest	South	West	Under 40	40-100	100+
Says what he believes	44.2%	70.8%	18.5%	40.2%	70.4%	55.4%	19.4%	44.6%	45.1%	40.9%	47.8%	45.9%	42.9%	44.0%
Says what he thinks people want to hear	55.8%	29.2%	81.5%	59.8%	29.6%	44.6%	80.6%	55.4%	54.9%	59.1%	52.2%	54.1%	57.1%	56.0%
Totals (Unweighted)	100.0% (992)	100.0% (353)	100.0% (253)	100.0% (280)	100.0% (209)	100.0% (343)	100.0% (320)	100.0% (189)	100.0% (226)	100.0% (343)	100.0% (234)	100.0% (363)	100.0% (408)	100.0% (126)

The Economist/YouGov Poll

December 18-21 2010



49. Obama's likeability

Regardless of whether you agree with him, do you like Barack Obama as a person?

	Total	Age			Race			Gender		Education		
		18-29	30-64	65+	White	Black	Hispanic	Male	Female	HS or Less	Some College	College Grad
Like a lot	32.9%	29.9%	34.9%	30.7%	28.7%	69.6%	27.0%	31.0%	34.6%	25.9%	35.0%	42.0%
Like somewhat	29.3%	34.1%	27.8%	26.8%	28.7%	23.7%	42.5%	31.5%	27.4%	33.1%	28.8%	23.6%
Dislike	26.6%	22.9%	26.4%	33.6%	30.6%	3.6%	17.8%	26.4%	26.8%	26.5%	25.6%	28.1%
Not sure	11.2%	13.1%	11.0%	8.8%	12.1%	3.1%	12.8%	11.1%	11.2%	14.5%	10.5%	6.4%
Totals	100.0%	100.0%	100.0%	100.0%	100.0%	100.0%	100.0%	100.0%	100.0%	100.0%	100.0%	100.0%
(Unweighted)	(996)	(239)	(605)	(152)	(787)	(109)	(100)	(463)	(533)	(436)	(323)	(237)

	Total	Party ID			Ideology			Region				Family Income		
		Dem	Rep	Ind	Lib	Mod	Con	Northeast	Midwest	South	West	Under 40	40-100	100+
Like a lot	32.9%	64.4%	5.3%	30.1%	70.7%	41.8%	9.9%	35.7%	33.7%	31.0%	32.8%	30.5%	33.7%	37.8%
Like somewhat	29.3%	24.9%	25.8%	34.9%	23.8%	34.8%	24.2%	27.5%	28.0%	27.8%	34.2%	33.0%	31.1%	19.2%
Dislike	26.6%	6.1%	54.1%	25.7%	2.8%	16.2%	54.5%	22.8%	28.5%	29.1%	24.2%	24.3%	25.7%	32.5%
Not sure	11.2%	4.7%	14.9%	9.3%	2.8%	7.1%	11.4%	13.9%	9.8%	12.2%	8.8%	12.2%	9.5%	10.5%
Totals	100.0%	100.0%	100.0%	100.0%	100.0%	100.0%	100.0%	100.0%	100.0%	100.0%	100.0%	100.0%	100.0%	100.0%
(Unweighted)	(996)	(353)	(254)	(280)	(210)	(344)	(320)	(192)	(226)	(343)	(235)	(366)	(408)	(126)

The Economist/YouGov Poll

December 18-21 2010



50. Words that describe Obama

Which of these words would you use to describe Barack Obama?

	Total	Age			Race			Gender		Education		
		18-29	30-64	65+	White	Black	Hispanic	Male	Female	HS or Less	Some College	College Grad
Honest	33.0%	33.9%	33.8%	28.8%	28.3%	66.5%	35.4%	32.1%	33.8%	26.6%	35.1%	41.3%
Intelligent	60.2%	59.5%	60.5%	60.3%	57.5%	85.1%	54.2%	62.4%	58.2%	50.4%	65.9%	69.7%
Religious	14.9%	13.0%	16.4%	12.9%	11.1%	44.2%	14.2%	14.6%	15.2%	19.1%	11.5%	11.9%
Inspiring	32.3%	39.6%	31.8%	22.1%	27.7%	69.7%	28.7%	32.2%	32.4%	25.0%	37.0%	38.9%
Patriotic	28.6%	25.6%	29.7%	29.7%	25.7%	51.7%	26.6%	27.7%	29.5%	24.5%	29.1%	35.0%
Strong	27.6%	28.7%	27.8%	24.9%	22.6%	62.6%	29.8%	24.1%	30.7%	23.3%	29.8%	32.2%
Bold	28.9%	35.1%	26.6%	26.8%	26.4%	49.1%	26.7%	28.1%	29.6%	26.8%	31.3%	29.5%
Experienced	15.2%	16.2%	15.3%	13.1%	10.8%	43.2%	20.4%	13.1%	17.0%	15.3%	16.0%	13.9%
Sincere	33.9%	29.5%	34.9%	37.7%	30.5%	64.5%	27.8%	31.9%	35.8%	29.7%	36.2%	38.3%
Partisan	26.2%	22.0%	27.8%	27.5%	27.7%	22.5%	16.8%	32.5%	20.6%	23.9%	27.1%	29.1%
Effective	22.0%	23.1%	22.0%	20.0%	16.6%	54.6%	31.4%	20.2%	23.6%	20.6%	23.9%	22.0%
Unifying	15.2%	15.4%	15.7%	13.2%	11.6%	43.8%	13.2%	13.8%	16.4%	14.7%	15.9%	15.1%
In Touch	24.5%	26.0%	25.0%	20.0%	19.0%	63.1%	27.3%	20.8%	27.7%	21.6%	28.2%	24.8%
Realistic	29.6%	31.3%	28.4%	30.6%	24.8%	66.5%	27.3%	27.8%	31.1%	26.0%	31.4%	33.4%
Decisive	21.9%	18.7%	22.4%	25.3%	17.7%	48.5%	28.3%	18.3%	25.1%	20.6%	26.1%	19.1%
Totals	(1,000)	(240)	(608)	(152)	(789)	(111)	(100)	(467)	(533)	(440)	(323)	(237)

	Total	Party ID			Ideology			Region				Family Income		
		Dem	Rep	Ind	Lib	Mod	Con	Northeast	Midwest	South	West	Under 40	40-100	100+
Honest	33.0%	58.8%	4.8%	33.9%	66.1%	43.4%	7.1%	32.5%	33.4%	30.1%	37.2%	32.4%	34.6%	34.2%
Intelligent	60.2%	79.6%	40.8%	67.6%	86.5%	71.9%	44.9%	59.8%	61.1%	60.6%	59.0%	56.0%	65.4%	63.4%
Religious	14.9%	24.8%	2.3%	14.9%	24.6%	16.1%	6.1%	15.4%	15.7%	15.4%	13.2%	17.5%	13.5%	10.5%
Inspiring	32.3%	54.7%	9.3%	34.5%	59.3%	41.5%	14.1%	34.4%	31.3%	31.0%	33.5%	27.3%	37.0%	34.8%
Patriotic	28.6%	49.5%	6.4%	27.5%	57.6%	35.9%	7.4%	28.8%	30.9%	24.6%	32.1%	30.4%	27.9%	32.3%
Strong	27.6%	47.3%	5.6%	27.4%	50.0%	36.4%	8.1%	24.8%	28.0%	27.6%	29.2%	27.8%	26.5%	29.2%
Bold	28.9%	36.0%	19.8%	32.5%	39.5%	29.7%	21.5%	24.4%	27.3%	28.9%	33.8%	31.2%	28.1%	26.3%
Experienced	15.2%	28.9%	2.3%	11.9%	29.2%	16.1%	5.5%	15.2%	14.2%	16.6%	13.9%	18.5%	13.7%	9.9%
Sincere	33.9%	61.3%	7.2%	33.0%	64.2%	44.9%	10.2%	34.7%	33.6%	32.7%	35.5%	33.5%	34.7%	36.0%
Partisan	26.2%	14.1%	45.3%	31.3%	14.2%	21.1%	48.6%	25.8%	31.6%	24.0%	24.7%	20.9%	30.4%	35.0%
Effective	22.0%	43.8%	4.0%	15.6%	44.9%	25.2%	7.2%	23.6%	20.5%	21.6%	22.8%	23.9%	21.4%	19.7%
Unifying	15.2%	28.8%	2.6%	14.6%	28.7%	19.6%	5.0%	19.6%	13.8%	13.4%	15.8%	14.9%	14.7%	17.2%
In Touch	24.5%	45.3%	5.1%	20.3%	45.8%	31.0%	6.3%	26.0%	26.4%	23.8%	22.4%	25.0%	26.8%	17.1%

continued on the next page . . .

The Economist/YouGov Poll

December 18-21 2010



continued from previous page

	Party ID			Ideology			Region				Family Income			
	Total	Dem	Rep	Ind	Lib	Mod	Con	Northeast	Midwest	South	West	Under 40	40-100	100+
Realistic	29.6%	54.3%	3.9%	27.4%	55.3%	39.4%	7.6%	29.5%	29.7%	29.0%	30.2%	31.5%	29.8%	26.5%
Decisive	21.9%	36.5%	10.1%	19.1%	34.7%	26.9%	12.1%	18.4%	19.9%	21.1%	27.5%	24.2%	18.3%	27.7%
Totals	(1,000)	(356)	(254)	(281)	(211)	(345)	(320)	(192)	(227)	(346)	(235)	(368)	(409)	(126)

The Economist/YouGov Poll

December 18-21 2010



51. Approval of U.S. Congress

Overall, do you approve or disapprove of the way that the United States Congress is handling its job?

	Total	Age			Race			Gender		Education		
		18-29	30-64	65+	White	Black	Hispanic	Male	Female	HS or Less	Some College	College Grad
Strongly approve	1.5%	0.9%	1.9%	1.1%	1.0%	5.0%	1.9%	1.1%	1.8%	1.8%	2.0%	0.5%
Somewhat approve	10.3%	11.0%	10.6%	8.5%	9.0%	20.1%	10.5%	11.3%	9.5%	8.2%	12.1%	11.9%
Neither approve nor disapprove	15.2%	23.1%	13.0%	10.2%	13.6%	21.7%	22.6%	12.6%	17.6%	18.4%	13.7%	11.8%
Somewhat disapprove	26.0%	28.3%	25.7%	23.0%	26.0%	21.4%	31.3%	24.7%	27.1%	23.0%	26.7%	30.1%
Strongly disapprove	39.1%	24.6%	41.6%	54.3%	43.8%	18.5%	20.9%	46.0%	33.0%	36.5%	38.4%	44.5%
Not sure	7.8%	12.1%	7.2%	2.8%	6.5%	13.3%	12.8%	4.3%	11.0%	12.1%	7.3%	1.3%
Totals (Unweighted)	100.0% (999)	100.0% (240)	100.0% (607)	100.0% (152)	100.0% (789)	100.0% (110)	100.0% (100)	100.0% (466)	100.0% (533)	100.0% (439)	100.0% (323)	100.0% (237)

	Total	Party ID			Ideology			Region				Family Income		
		Dem	Rep	Ind	Lib	Mod	Con	Northeast	Midwest	South	West	Under 40	40-100	100+
Strongly approve	1.5%	4.1%	0.3%	0.0%	3.0%	0.9%	1.9%	1.0%	1.0%	2.8%	0.4%	2.1%	1.2%	1.6%
Somewhat approve	10.3%	19.0%	4.9%	7.2%	18.5%	14.2%	4.9%	13.9%	9.8%	9.0%	10.1%	9.2%	11.9%	7.8%
Neither approve nor disapprove	15.2%	21.9%	7.5%	9.1%	16.0%	15.2%	7.7%	16.5%	11.8%	14.0%	19.3%	22.8%	11.2%	9.0%
Somewhat disapprove	26.0%	29.8%	24.5%	28.7%	31.8%	33.4%	19.7%	25.9%	28.2%	24.8%	25.7%	27.7%	25.1%	22.8%
Strongly disapprove	39.1%	19.2%	57.9%	49.7%	27.7%	31.4%	62.4%	37.0%	43.6%	38.5%	37.6%	27.4%	44.6%	57.1%
Not sure	7.8%	6.0%	4.9%	5.4%	3.0%	4.9%	3.5%	5.7%	5.6%	10.9%	7.0%	10.8%	5.9%	1.7%
Totals (Unweighted)	100.0% (999)	100.0% (355)	100.0% (254)	100.0% (281)	100.0% (210)	100.0% (345)	100.0% (320)	100.0% (192)	100.0% (226)	100.0% (346)	100.0% (235)	100.0% (367)	100.0% (409)	100.0% (126)

The Economist/YouGov Poll

December 18-21 2010



52. Direction of country

Would you say things in this country today are...

	Total	Age			Race			Gender		Education		
		18-29	30-64	65+	White	Black	Hispanic	Male	Female	HS or Less	Some College	College Grad
Generally headed in the right direction	27.2%	28.2%	27.8%	23.5%	23.1%	56.7%	28.9%	28.3%	26.2%	22.7%	28.1%	33.7%
Off on the wrong track	58.5%	52.8%	58.9%	66.5%	63.7%	27.1%	49.4%	60.3%	57.0%	59.7%	58.7%	56.5%
Not sure	14.3%	19.0%	13.3%	10.0%	13.2%	16.2%	21.7%	11.4%	16.8%	17.7%	13.2%	9.8%
Totals (Unweighted)	100.0% (1,000)	100.0% (240)	100.0% (608)	100.0% (152)	100.0% (789)	100.0% (111)	100.0% (100)	100.0% (467)	100.0% (533)	100.0% (440)	100.0% (323)	100.0% (237)

	Total	Party ID			Ideology			Region				Family Income		
		Dem	Rep	Ind	Lib	Mod	Con	Northeast	Midwest	South	West	Under 40	40-100	100+
Generally headed in the right direction	27.2%	49.8%	8.1%	24.4%	52.7%	36.7%	10.4%	30.0%	27.3%	26.5%	26.0%	24.6%	27.8%	32.4%
Off on the wrong track	58.5%	34.1%	82.1%	62.7%	33.5%	48.4%	84.2%	56.1%	63.0%	57.4%	57.8%	59.5%	58.1%	63.6%
Not sure	14.3%	16.1%	9.8%	12.9%	13.7%	14.9%	5.3%	13.9%	9.7%	16.1%	16.2%	15.9%	14.1%	4.0%
Totals (Unweighted)	100.0% (1,000)	100.0% (356)	100.0% (254)	100.0% (281)	100.0% (211)	100.0% (345)	100.0% (320)	100.0% (192)	100.0% (227)	100.0% (346)	100.0% (235)	100.0% (368)	100.0% (409)	100.0% (126)

The Economist/YouGov Poll

December 18-21 2010



53. Trend of economy

Overall, do you think the economy is getting better or worse?

	Total	Age			Race			Gender		Education		
		18-29	30-64	65+	White	Black	Hispanic	Male	Female	HS or Less	Some College	College Grad
Getting better	20.1%	25.5%	18.8%	16.3%	18.2%	38.0%	15.9%	25.0%	15.8%	12.8%	21.7%	30.5%
About the same	46.1%	44.9%	45.7%	49.3%	47.5%	37.0%	44.3%	45.4%	46.7%	49.6%	43.5%	43.3%
Getting worse	27.0%	19.9%	28.8%	32.1%	28.7%	12.5%	28.8%	25.4%	28.4%	27.5%	28.7%	24.1%
Not sure	6.8%	9.7%	6.7%	2.4%	5.6%	12.6%	11.0%	4.2%	9.2%	10.1%	6.1%	2.1%
Totals	100.0%	100.0%	100.0%	100.0%	100.0%	100.0%	100.0%	100.0%	100.0%	100.0%	100.0%	100.0%
(Unweighted)	(997)	(239)	(607)	(151)	(786)	(111)	(100)	(465)	(532)	(438)	(322)	(237)

	Total	Party ID			Ideology			Region				Family Income		
		Dem	Rep	Ind	Lib	Mod	Con	Northeast	Midwest	South	West	Under 40	40-100	100+
Getting better	20.1%	33.9%	7.2%	22.9%	41.9%	27.4%	8.0%	25.3%	21.1%	19.4%	16.4%	13.1%	23.3%	31.0%
About the same	46.1%	44.2%	50.2%	46.2%	39.7%	45.8%	49.9%	42.9%	43.3%	46.9%	49.9%	50.0%	48.2%	32.7%
Getting worse	27.0%	16.5%	37.9%	25.2%	15.3%	22.7%	37.5%	24.5%	29.5%	25.4%	28.7%	27.1%	24.3%	33.7%
Not sure	6.8%	5.5%	4.7%	5.8%	3.2%	4.0%	4.6%	7.3%	6.0%	8.3%	5.0%	9.8%	4.1%	2.7%
Totals	100.0%	100.0%	100.0%	100.0%	100.0%	100.0%	100.0%	100.0%	100.0%	100.0%	100.0%	100.0%	100.0%	100.0%
(Unweighted)	(997)	(355)	(253)	(280)	(211)	(343)	(320)	(192)	(226)	(345)	(234)	(367)	(407)	(126)

54. Stock market expectations over next year

Do you think the stock market will be higher or lower 12 months from now?

	Total	Age			Race			Gender		Education		
		18-29	30-64	65+	White	Black	Hispanic	Male	Female	HS or Less	Some College	College Grad
Higher	27.5%	28.7%	27.1%	26.7%	25.9%	40.1%	26.8%	36.1%	19.8%	17.3%	28.1%	43.9%
About the same	34.2%	36.8%	34.3%	29.7%	35.1%	28.0%	32.9%	33.6%	34.7%	34.2%	35.1%	33.0%
Lower	15.7%	10.5%	15.9%	23.5%	17.1%	3.9%	17.8%	13.1%	18.1%	16.1%	16.1%	14.7%
Not sure	22.6%	24.0%	22.7%	20.1%	21.9%	28.1%	22.5%	17.2%	27.4%	32.4%	20.8%	8.3%
Totals	100.0%	100.0%	100.0%	100.0%	100.0%	100.0%	100.0%	100.0%	100.0%	100.0%	100.0%	100.0%
(Unweighted)	(996)	(239)	(606)	(151)	(787)	(110)	(99)	(463)	(533)	(437)	(323)	(236)

	Total	Party ID			Ideology			Region				Family Income		
		Dem	Rep	Ind	Lib	Mod	Con	Northeast	Midwest	South	West	Under 40	40-100	100+
Higher	27.5%	35.4%	22.5%	31.4%	45.6%	32.5%	21.4%	35.9%	25.2%	27.4%	23.4%	18.9%	32.3%	40.6%
About the same	34.2%	30.9%	38.8%	34.3%	28.5%	35.1%	40.7%	31.9%	31.5%	35.3%	36.8%	34.1%	35.3%	34.3%
Lower	15.7%	9.8%	23.4%	15.7%	5.7%	14.8%	22.9%	11.5%	18.0%	15.7%	16.9%	16.8%	14.9%	14.6%
Not sure	22.6%	23.9%	15.3%	18.6%	20.2%	17.6%	15.0%	20.8%	25.3%	21.6%	22.9%	30.2%	17.4%	10.5%
Totals	100.0%	100.0%	100.0%	100.0%	100.0%	100.0%	100.0%	100.0%	100.0%	100.0%	100.0%	100.0%	100.0%	100.0%
(Unweighted)	(996)	(353)	(254)	(280)	(210)	(343)	(320)	(192)	(226)	(343)	(235)	(367)	(409)	(125)

The Economist/YouGov Poll

December 18-21 2010



55. Change in personal finances over past year

Would you say that you and your family are...

	Total	Age			Race			Gender		Education		
		18-29	30-64	65+	White	Black	Hispanic	Male	Female	HS or Less	Some College	College Grad
Better off financially	12.9%	23.4%	11.1%	2.3%	12.3%	16.8%	13.3%	16.0%	10.1%	7.2%	15.1%	19.9%
About the same as now	38.7%	40.7%	37.1%	40.7%	39.3%	40.2%	30.4%	42.8%	35.0%	37.1%	37.1%	43.1%
Worse off financially	43.5%	27.2%	47.4%	56.6%	44.2%	35.9%	47.1%	37.4%	49.1%	47.3%	45.4%	35.0%
Not sure	4.9%	8.7%	4.4%	0.4%	4.1%	7.1%	9.2%	3.8%	5.8%	8.4%	2.4%	1.9%
Totals (Unweighted)	100.0% (995)	100.0% (239)	100.0% (605)	100.0% (151)	100.0% (784)	100.0% (111)	100.0% (100)	100.0% (463)	100.0% (532)	100.0% (436)	100.0% (323)	100.0% (236)

	Total	Party ID			Ideology			Region				Family Income		
		Dem	Rep	Ind	Lib	Mod	Con	Northeast	Midwest	South	West	Under 40	40-100	100+
Better off financially	12.9%	16.2%	10.4%	12.8%	19.7%	14.5%	9.2%	15.2%	10.5%	14.5%	11.1%	10.6%	13.8%	25.5%
About the same as now	38.7%	43.5%	37.0%	37.9%	43.5%	42.1%	34.6%	45.2%	34.0%	36.3%	41.5%	33.7%	42.5%	38.4%
Worse off financially	43.5%	36.7%	49.5%	44.9%	33.7%	40.2%	54.0%	34.5%	51.3%	42.5%	44.7%	49.2%	41.0%	32.9%
Not sure	4.9%	3.6%	3.1%	4.4%	3.0%	3.2%	2.2%	5.0%	4.2%	6.7%	2.7%	6.5%	2.8%	3.2%
Totals (Unweighted)	100.0% (995)	100.0% (354)	100.0% (253)	100.0% (280)	100.0% (211)	100.0% (343)	100.0% (319)	100.0% (192)	100.0% (225)	100.0% (344)	100.0% (234)	100.0% (367)	100.0% (408)	100.0% (124)

Emotional and unemotional pictures shown to respondents

Unemotional

Emotional

John Boehner



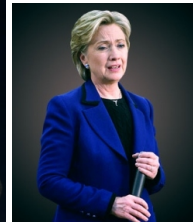
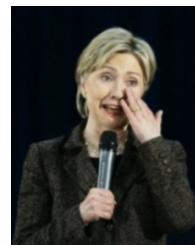
George W. Bush



Bill Clinton



Hillary Clinton



The Economist/YouGov Poll

December 18-21 2010



Sponsorship	<i>The Economist</i>
Fieldwork	YouGov
Interviewing Dates	December 18-21, 2010
Target population	U.S. citizens, aged 18 and over.
Sampling method	Respondents were selected from YouGov's PollingPoint panel using sample matching. A random sample (stratified by age, gender, race, education, and region) was selected from the 2005–2007 American Community Study. Voter registration, turnout, religion, news interest, minor party identification, and non-placement on an ideology scale, were imputed from the 2008 Current Population Survey Registration and Voting Supplement and the Pew Religion in American Life Survey. Matching respondents were selected from the PollingPoint panel, an opt-in Internet panel.
Weighting	The sample was weighted using propensity scores based on age, gender, race, education, news interest, voter registration, and non-placement on an ideology scale. The weights range from 0.5 to 3.5, with a mean of one and a standard deviation of 0.5.
Number of respondents	1000
Margin of error	± 3.4% (adjusted for weighting)
Margin of error (Registered Voters)	± 3.9% (adjusted for weighting)
Survey mode	Web-based interviews
Questions not reported	23 questions not reported.